

Annalee

Fabrics by Jane Dixon



makower uk

1384 Broadway
New York, NY 10018
(800) 223-5678

www.andoverfabrics.com

Quilt designed by
Jane Dixon and Gail Kessler
Quilt size: 100" x 100"

Annalee Quilt

Introducing Andover Fabrics new collection: Annalee by Jane Dixon
Quilt designed by Jane Dixon and Gail Kessler

Bold and vibrant describe the visual impact of the large-scale leaves on this king-size quilt. The vibrant prints in the leaves are paraded in three columns that go together quickly. The only piecing is joining the central panels and adding the borders. Your quilting skills can shine in the plain background.

Quilt finishes 100" x 100"

Fabric Requirements

	Yardage	Fabric
*Fabric A inner border	1½ yards	5803-C
Fabric B middle border	2¾ yards	5800-L
Fabric C panels, outer border	5½ yards	1867-WW
3 Prints leaves, border	½ yard each	5798-C, 5799-G, 5801-R
5 prints leaves, border	Fat ¼ yard each	5801-G, 5801-LG, 5802-E, 5803-E, 5804-G
Backing	9 yards	5802-C
<i>*includes binding</i>		

Cutting Directions

Note: Read assembly directions before cutting patches. All measurements are cut sizes and include ¼" seam allowances. A fat ¼th is an 18" x 20"-22" cut. Inner and middle borders are cut the exact lengths required plus ¼" seam allowances. Outer borders are cut 2" longer plus seam allowances to allow for shrinkage due to the appliqué. WOF designates the width of fabric from selvedge to selvedge (approximately 42" wide).

- Fabric A** Cut (8) strips 2½" x WOF, pieced to make the following:
(2) inner top/bottom borders 2½" x 80½"
(2) inner side borders 2½" x 76½"
Cut (11) strips 2½" x WOF for binding
- Fabric B** Cut (2) middle top/bottom borders 7½" x 94½", cut lengthwise
Cut (2) middle side borders 7½" x 80½", cut lengthwise
- Fabric C** Cut (3) panels 20½" x 76½" (Read Step 1 before cutting)
Cut (2) panels 8½" x 76½"
Cut (10) strips 3½" x WOF, pieced to make the following:
(2) outer top/bottom borders 3½" x 102½" (trim later)
(2) outer side borders 3½" x 96½" (trim later)
- 3 Prints** From each cut (3) rectangles 7" x 14" for leaves
(9 leaves total)
- 5 Prints** From each cut (1 or 2) rectangles 7" x 14" (9 leaves total)
- Backing** Cut (3) panels 37" x 108", pieced to fit quilt top with overlap on all sides

Making the Quilt

- Hint:** Before cutting the panels and borders, spray-starch the white fabric to stabilize it for appliqué. Referring to the Quilt Diagram, sew the 20½"-wide panels together side by side. Sew an 8½"-wide panel to each side of the pieced center. Press seam allowances open to distribute the bulk evenly.
- To prepare the leaf appliqué, place a rectangle on a cutting board. Position a rotary ruler along one corner and trim the corner at an angle to cut off a triangle. Cut off a second triangle on the adjacent corner. The leaf should come to a point on the end as shown. Make 2 cuts on the opposite end. Repeat this step on each of the 18 rectangles. Vary the shape and size of the triangles so each leaf is different. These cutaway triangles are appliquéd to the outer border in Step 5. Set triangles aside. You may need to cut more triangles later from the leftover prints.
- Use your favorite method to appliqué the leaves on the background made in Step 1. Six leaves are centered in the middle panel and 6 are placed on each of the other 20½"-wide panels as shown in the Quilt Diagram. Turn the leaves as you wish—think of leaves falling in autumn.

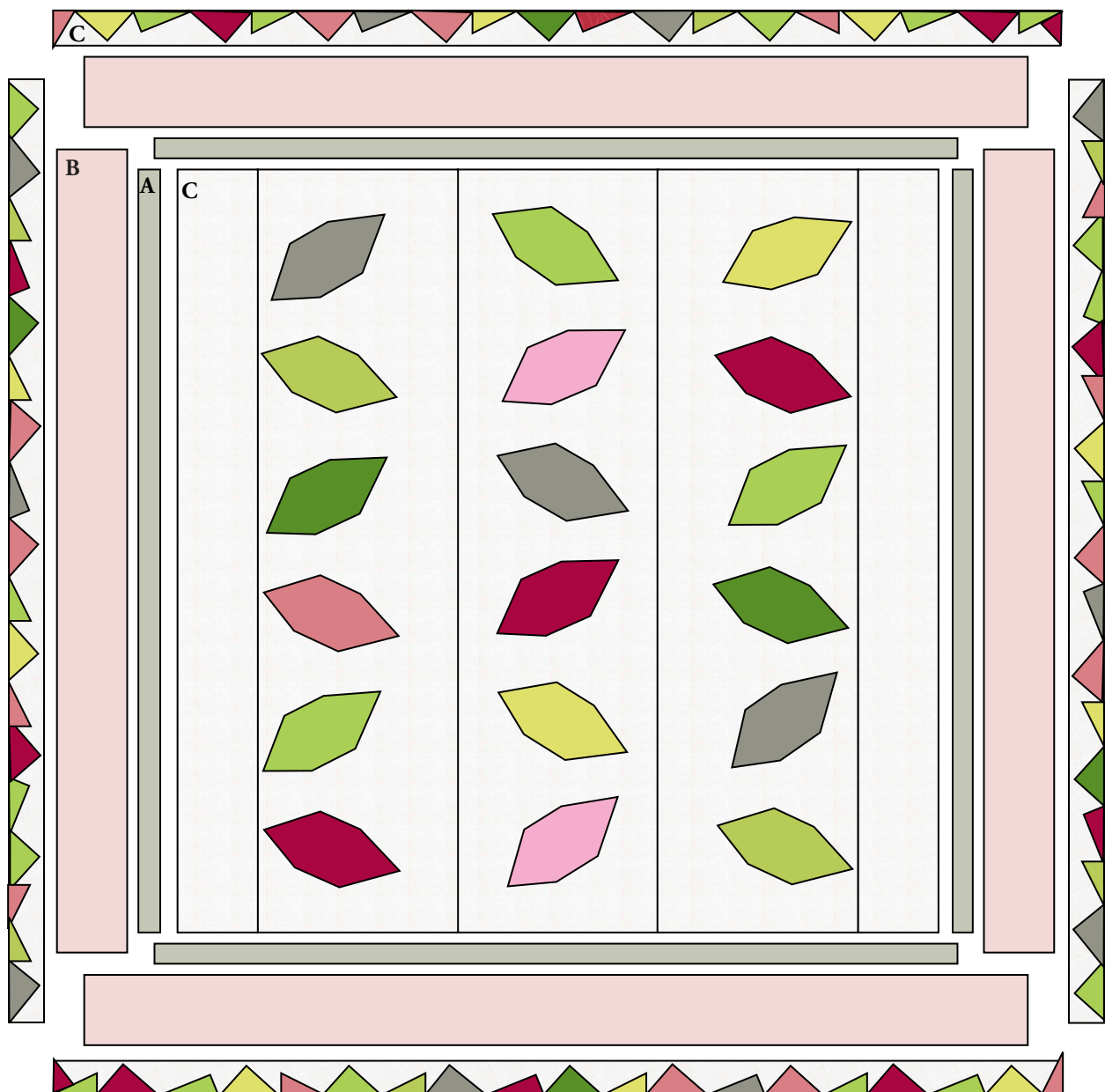
Annalee Quilt

4. Sew Fabric A borders to the quilt, side borders first. Sew Fabric B borders to the quilt in the same order.
5. On each of the Fabric C borders, position the triangles from Step 2 side-by-side, long edges (bases) even with the raw edge of the border. Overlap triangles slightly so they will be touching once the binding is added. Cut triangles in half if they are too large to fit. Cut and add more triangles if needed to fill each border. Depending on the size of your triangles, you may not need to use all that were cut from the leaves. Place the triangles randomly in an arrangement pleasing to you. If any triangle's point extends closer than $\frac{3}{8}$ " to the opposite edge of the border, trim it. You don't want any of the triangles to get caught in the seam when you sew borders to the quilt. Use your favorite appliqué method to attach the triangles to the borders.

6. Sew the shorter side borders to the quilt with the bases of the triangles on the outer edge as shown. Trim the ends even with the quilt. Sew the longer borders to the top and bottom; trim.

Finishing the Quilt

7. Layer the quilt with batting and backing and baste. Quilt in the ditch around borders and appliquéd leaves. Quilt the background panels as desired. A grid of 2" squares set diagonally on point makes a lovely pattern. Stop the grid at the leaves. Bind to finish the quilt.



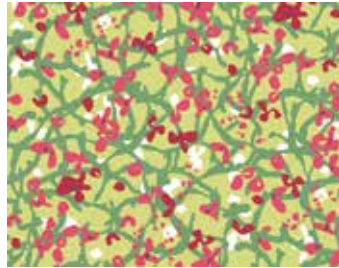
Quilt Diagram

Annalee

by Jane Dixon



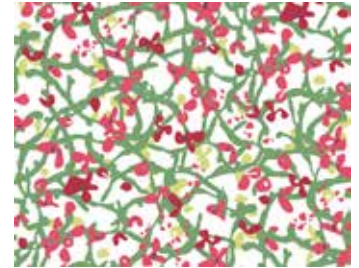
5798-L



5799-G*



5799-L



5799-LG



5800-L*



5801-G*



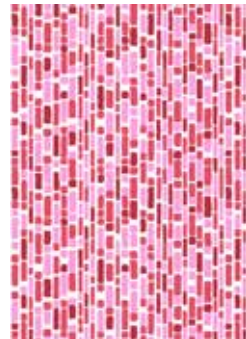
5801-LG*



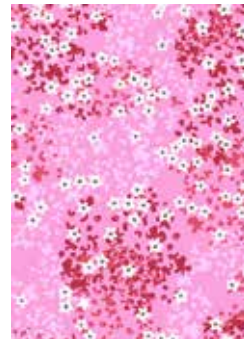
5802-E*



5802-G



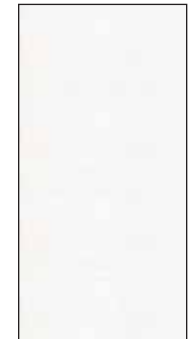
5803-E*



5804-E



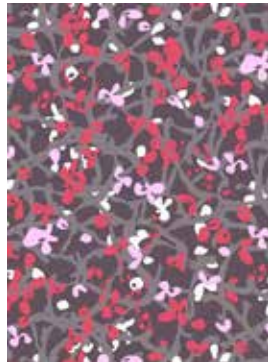
5805-G



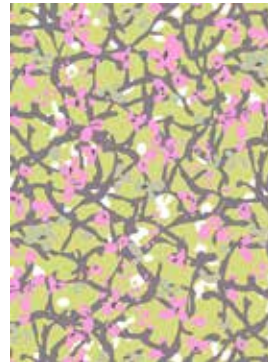
1867-WW*



5798-C*



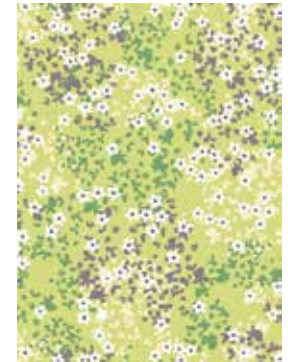
5799-C



5799-GE



5800-C



5804-G*



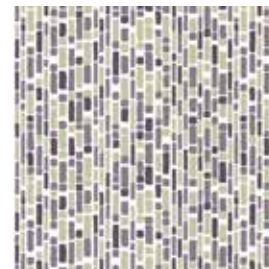
5801-C



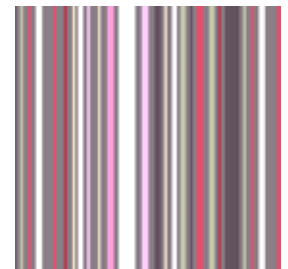
5801-R*



5802-C*



5803-C*



5805-C