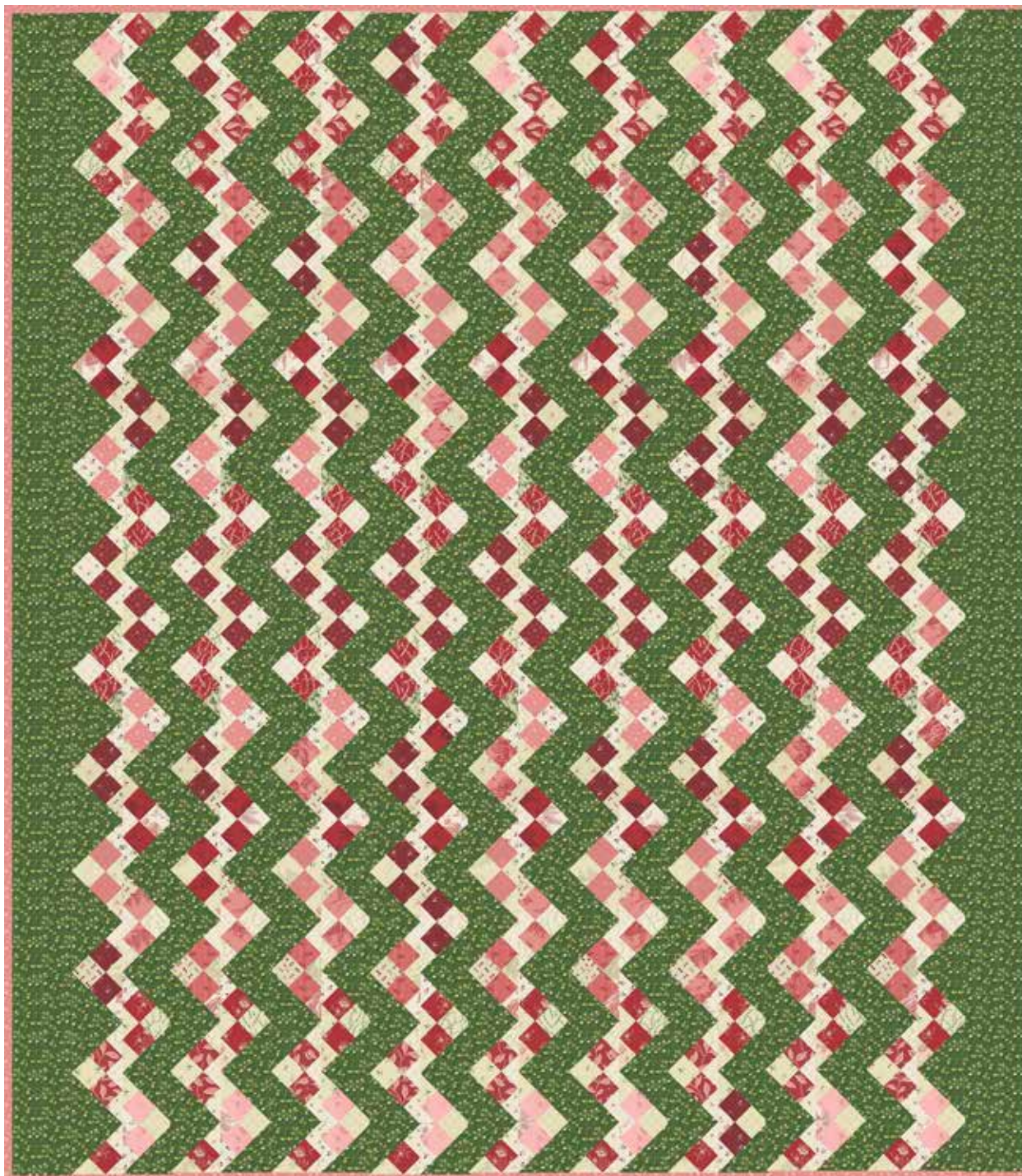


# Evergreen & Braveheart

EDYTA SITAR OF LAUNDRY BASKET QUILTS



## Hunter

Quilt Design: **Edyta Sitar**  
Quilt Size: **64 1/2" x 73 1/2"**  
[andoverfabrics.com](http://andoverfabrics.com)

andover • [makower.uk](http://makower.uk)

Free Pattern Download Available

1384 Broadway New York, NY 10018  
Tel. (800) 223-5678 • [andoverfabrics.com](http://andoverfabrics.com)

# Hunter



Featuring Andover Fabrics new Collections: Evergreen & Braveheart by Edyta Sitar  
Quilt designed by Edyta Sitar of Laundry Basket Quilts

Quilt finished 64 1/2" x 74 1/2"

## Cutting Directions

**Note: Read assembly directions before cutting patches.** Borders are cut to exact length required plus 1/4" seam allowance. WOF designates the width of fabric from selvedge to selvedge (approximately 42" wide).

**Fabric A** Cut (5) 2 3/4" squares from light colored Fat 1/4's. Cut the squares across both diagonals to make (20) 2 3/4" triangles. *Note: Only (18) triangles will be used.*  
Cut (315) 2 3/8" squares from light colored Fat 1/4's. Cut the squares across (1) diagonal to make (630) 2 3/8" triangles.  
Cut (198) 2" squares from light colored Fat 1/4's.  
Cut (414) 2" squares from dark colored Fat 1/4's.

**Fabric B** Cut (10) 7 3/4" x WOF strips. Sub-cut the strips into (50) 7 3/4" squares. Cut the squares across both diagonals to make (200) 7 3/4" triangles. *Note: Only (198) triangles will be used.*  
Cut (1) 4 1/8" x WOF strip. Sub-cut (9) 4 1/8" squares. Cut the squares across one diagonal to make (18) 4 1/8" triangles.  
Cut (4) 3 1/2" x WOF strips.

**Fabric C** Cut (7) 2 1/2" x WOF strips for the binding.

**Backing** Cut (2) 73" x WOF strips. Sew the strips together and trim to make (1) 73" x 83" backing.

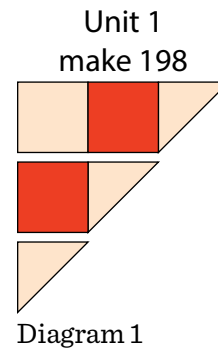
## Fabric Requirements

	Yardage	Fabric
<b>Fabric A blocks</b>	1 Fat 1/4 bundle	BRAVEHEART-X
<b>Fabric B blocks</b>	2 7/8 yards	9176-G
<b>Fabric C binding</b>	2/3 yard	8515-RE
<b>Backing</b>	4 1/8 yards	9174-RE

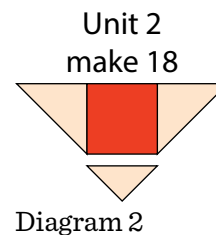
## Making the Quilt

### 1. Block Assembly

Sew (1) 2" Fabric A light square, (2) 2" Fabric A dark squares and (3) Fabric A 2 3/8" triangles together to make (1) Unit 1 triangle (Diagram 1). Repeat to make (198) Unit 1 triangles total.



2. Sew (2) Fabric A 2 3/8" triangles, (1) 2" Fabric A dark square and (1) Fabric A 2 3/4" triangle together to make (1) Unit 2 triangle (Diagram 2). Repeat to make (18) Unit 2 triangles total.





# Hunter

3. Sew (1) Fabric B  $4\frac{1}{8}$ " triangle, (11) Unit 1 triangles, (11) Fabric B  $7\frac{3}{4}$ " triangles and (1) Unit 2 triangle together to make (1) column (Diagram 3). Repeat to make (18) columns total.

Column  
make 18



Diagram 3

## Quilt Top Assembly

*(Refer to the Quilt Layout when assembling the quilt top.)*

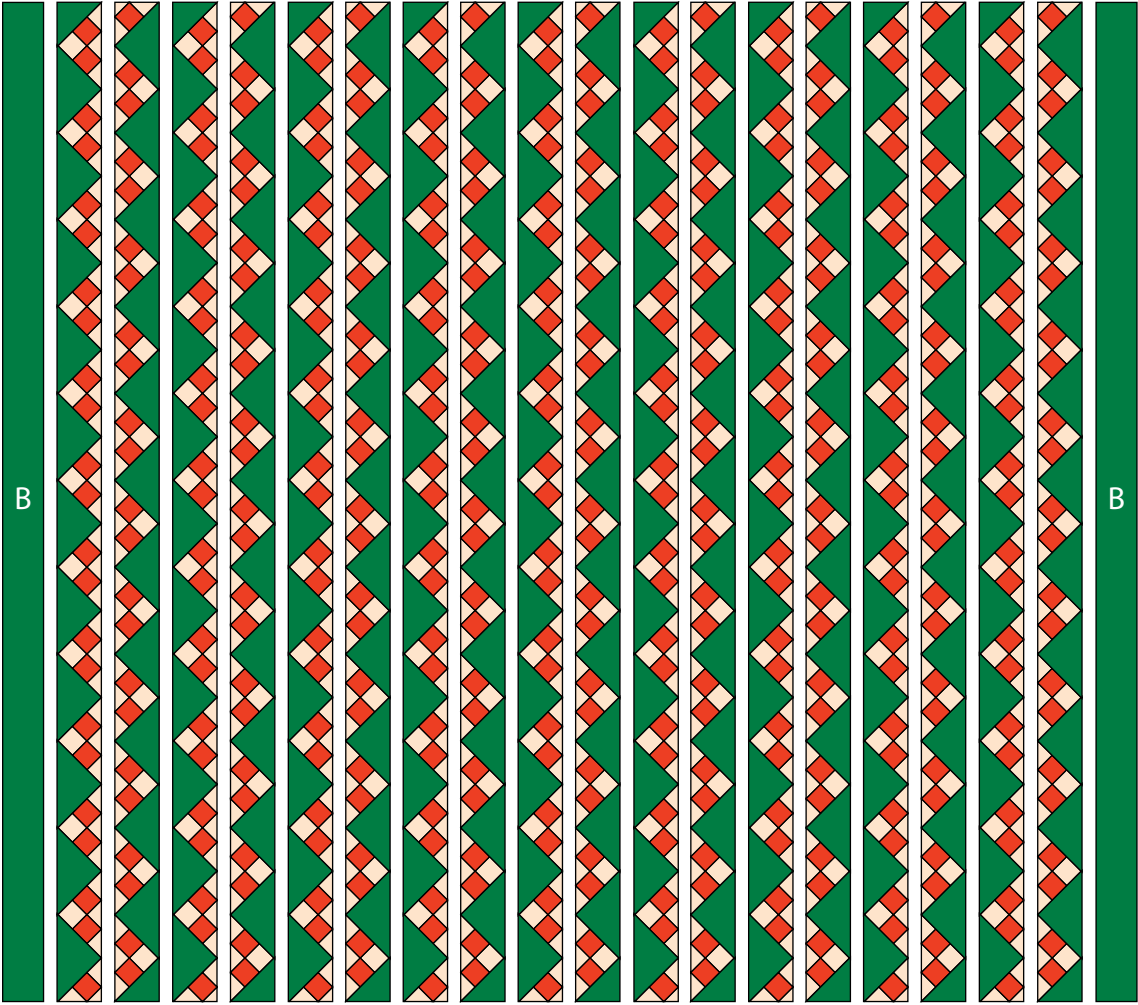
4. Sew the (18) columns together, rotating every other column 180-degrees, to make the Center Block.
5. Measure the sides of the Center Block. Sew (4)  $3\frac{1}{2}$ " x WOF Fabric B strips together end to end with diagonal seams. Trim the seams to  $\frac{1}{4}$ " and cut (2) strips to the Center Block side measurement. Sew (1) strip to each side of the Center Block to make the quilt top.

## Finishing the Quilt

6. Layer and quilt as desired.
7. Sew the (7) Fabric C binding strips together, end to end with a 45-degree seams, to make the binding. Fold this long strip in half lengthwise with wrong sides together and press.
8. Bind as desired.

# Hunter

---



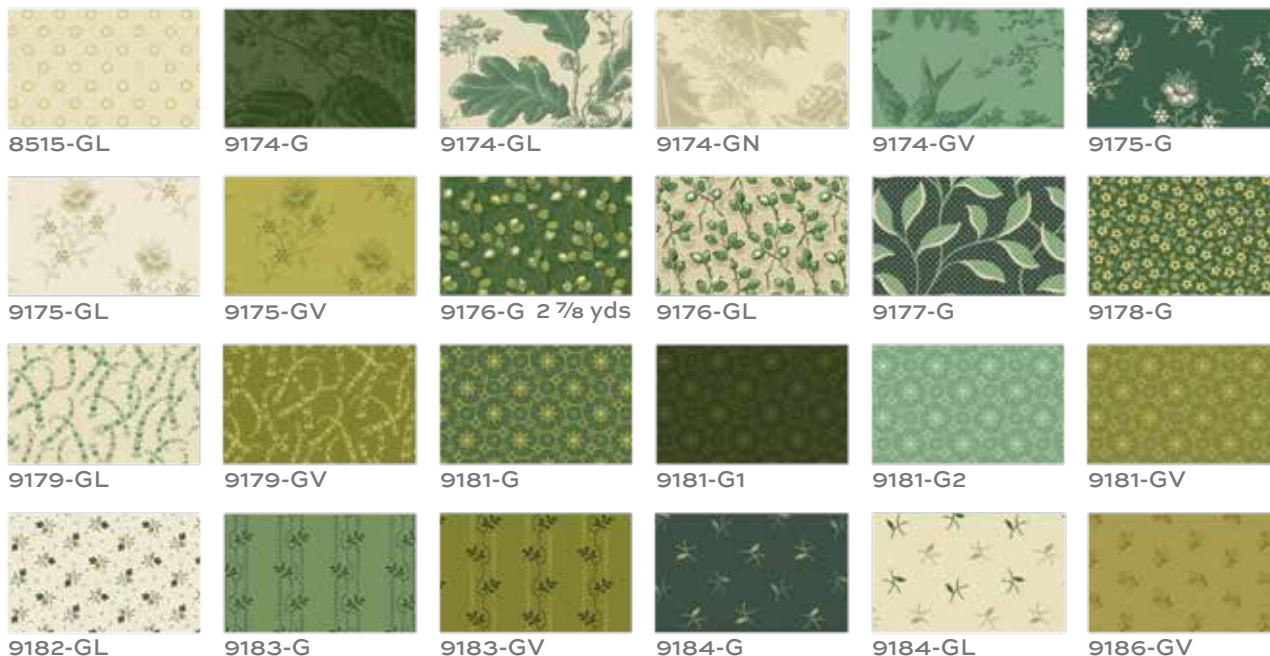
Quilt Layout

# Evergreen & Braveheart



EDYTA SITAR OF LAUNDRY BASKET QUILTS

## Evergreen



## Braveheart



Fabrics shown are 25% of actual size.

## About Our Fabrics

A recognized leader in the quilting industry, Andover Fabrics features designs by a wide variety of talented artists and licenses, including Downton Abbey and Eric Carle's Very Hungry Caterpillar. Catering to the tastes of creative and dedicated quilters, Andover has a style for everyone — authentic reproductions, romantic florals, modern and more.