

# Cambridge

BY KATHY HALL



Quilt designed by:  
**Kathy Hall**

Quilt Size: **63" x 81"**  
[andoverfabrics.com](http://andoverfabrics.com)

## About Cambridge

Kathy Hall's latest reproduction collection, led by a large floral print with vases, is perfect for broderie perse and borders. Smaller prints with tossed motifs and florals coordinate perfectly to create Cambridge.

andover



makower uk  
Concord Fabrics UK Ltd

Free Pattern Download Available

1384 Broadway New York, NY 10018  
Tel. (800) 223-5678 • [andoverfabrics.com](http://andoverfabrics.com)

# Cambridge Quilt



Introducing Andover Fabrics new collection: **CAMBRIDGE** by Kathy Hall

Quilt designed by Kathy Hall

Quilt finishes 63" x 81"  
48 Blocks: 8" x 8"

*Beautiful reproduction prints combine in these easier-than-they-look blocks. There are no set-in seams, just easy piecing. The sashes and light setting squares add interesting frames between blocks.*

## Cutting Directions

**Note:** Read assembly directions before cutting patches. All measurements are cut sizes and include 1/4" seam allowances. WOF designates the width of fabric from selvedge to selvedge (approximately 42" wide).

### Fabric A

Cut (2) side borders 4 1/2" x 73 1/2", cut lengthwise  
(2) top/bottom borders 4 1/2" x 63 1/2", cut lengthwise

### Fabric B

Cut (48) squares 2" for block centers  
Cut (63) setting squares 1 1/2"

### Fabric C

Cut (8) strips 2 1/2" x WOF for binding  
Cut (110) sashes 1 1/2" x 8 1/2"

### 12 Prints

**From each of 2:** Cut (20) squares 4 7/8"  
(Read step 1 before cutting)

**From each of 2:** Cut (12) squares 4 7/8"

**From each of 8:** Cut (16) squares 4 7/8"

### 3 "Solids"

**From each:** Cut (48) squares 2" for block centers

### Backing

Cut (2) panels 36" x 89", pieced to fit quilt top with overlap on all sides

## Fabric Requirements

		Yardage	Fabric
<b>Fabric A</b>	border	2 1/4 yards	8860-B
<b>Fabric B</b>	setting	1/2 yard	8865-BL
<b>*Fabric C</b>	sash	2 yards	8865-KR
<b>12 Prints</b>	blocks	1/2 yard each	
	8860-K 8861-B 8861-KN 8861-KR		
	8862-B 8862-KN 8862-KR 8863-B		
	8863-K 8864-B 8864-K 8864-KN		
<b>3 "Solids"</b>	blocks	1/4 yard each	
	8865-BG 8866-B 8866-BR		
<b>Backing</b>		5 yards	8866-KN
*includes binding			

## Making the Quilt

1. Cut the 4 7/8" squares as you follow these directions to ensure that you cut the correct number for the various combinations. The blocks in the quilt shown are made in 12 different combinations, 4 blocks of each combination, for a total of 48 blocks. Notice that in each block, the 4 outer triangles are the same fabric, and there are 2 different prints used in the patches surrounding the center. You need a total of 192 print 4 7/8" squares, cut as listed above. If you wish to arrange the fabrics in your own combinations, and to simplify the cutting, cut 16 squares from each of the 12 prints. This cutting will not result in the quilt exactly as shown. **Hint:** If you wish, cut these 192 squares each 5", so that the blocks can be trimmed to ensure they are the same size.

Refer to the block diagrams when selecting and cutting fabrics for each combination. For each block, choose two 4 7/8" squares of one fabric for the outer patches (label these W), 1 square of a second fabric (X), and 1 square of a third fabric (Y). Select four 2" squares (Z) for the block center. Divide all the fabrics in this manner. You should have 12 different combinations if you are making the quilt shown.



# Cambridge Quilt

- The first step in piecing the blocks is to make half-square triangles (HST) that finish 4" square. Select one of the sets of 4 fabrics from Step 1. Draw a diagonal line on the wrong side of the X and Y squares. Place a marked X square on top of a W square, right sides together. Sew 1/4" seam on each side of the marked line; cut apart on the marked line (Diagram 1). Press open to make 2 pieced HST. Trim the HST to 4 1/2" if needed. Make 2 more HST using the remaining W and Y squares (Diagram 2). Repeat this step with each set of fabrics.

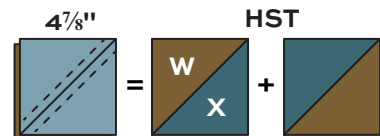


Diagram 1

Make 8 alike in each combination

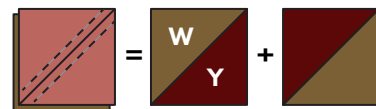


Diagram 2

- The block center patches (Z) are added with quick stitch-and-flip piecing methods. Draw a diagonal line on the wrong side of each 2" square. Referring to Diagram 3, place the appropriate Z square on the 4 1/2" pieced HST with right sides together, aligning raw edges with the corner of the X or Y patch as shown. Be sure that you are stitching the 2" square to the correct corner. Stitch on the drawn line; trim away and discard excess fabric. Press open. Make 4 units alike for each block.

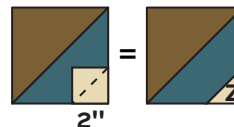
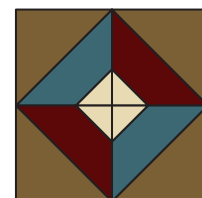


Diagram 3



Block

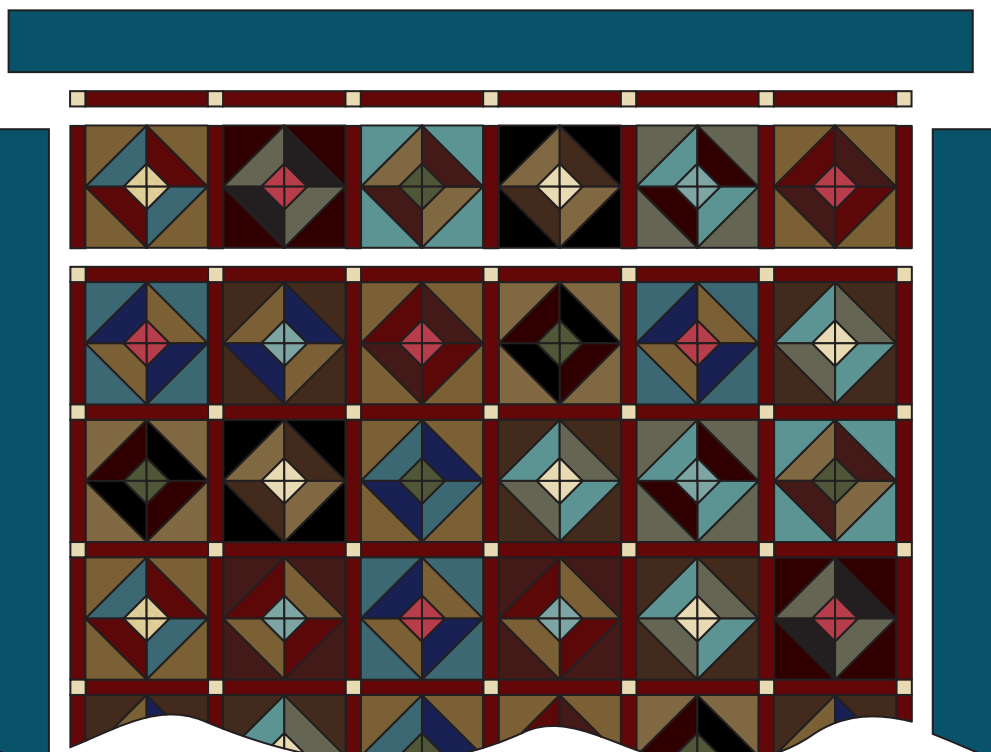
Make 4 alike (48 total)

- To make a block, join the 4 pieced units with the Z patches meeting in the center. Make 4 blocks alike in each combination. Make a total of 48 blocks.



Make 4 each

- Referring to the Quilt Diagram, arrange the blocks into 8 rows of 6 blocks each. Join 6 blocks with 7 Fabric C sashes to make a horizontal block row. Make 8 rows like this. Join 7 Fabric B 1 1/2" setting squares with 6 Fabric C sashes. Make 9 sash rows like this. Join the rows in the order shown.



Quilt Diagram

- Sew the long borders to the sides of the quilt. Sew shorter borders to the top and bottom.

## Finishing the Quilt

- Layer the quilt with batting and backing and baste. Quilt in the ditch around borders and block patches. Quilt around the printed motifs in the border. Bind to finish the quilt.



# Cambridge

BY KATHY HALL



8860-B



8860-K



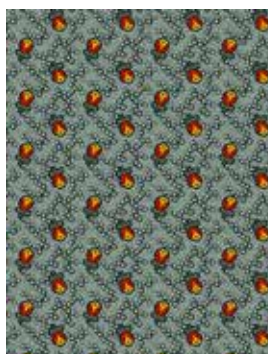
8863-B



8863-K



8861-B



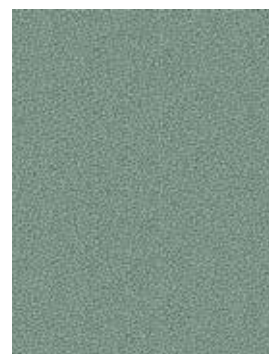
8862-B



8864-B



8865-BG



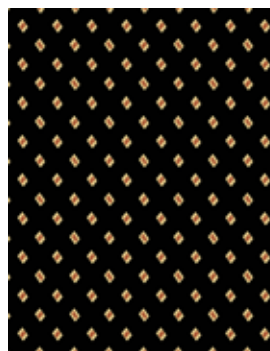
8866-B



8861-KN



8862-KN



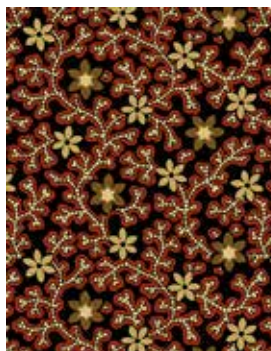
8864-K



8865-BL



8866-BR



8861-KR



8862-KR



8864-KN



8865-KR



8866-KN

All fabrics are used in quilt pattern. Fabrics shown are 25% of actual size.

andover

•  
• **makower uk**  
• Concord Fabrics UK Ltd  
•

Free Pattern Download Available

1384 Broadway New York, NY 10018  
Tel. (800) 223-5678 • [andoverfabrics.com](http://andoverfabrics.com)

3/15/18