

Catnap

FABRICS BY LIZZY HOUSE



Trick of the Light
Quilt Design: **Lizzy House**

Quilt Size: **60" x 80"**

andoverfabrics.com

About Catnap

Catnap draws from my Scandinavian roots, my love of home, cats, and napping. In my small apartment, I follow the sun through the day as it shifts from room to room. You don't have to love cats to love a good catnap. — *Lizzy House*

andover

•
•
•
•
•
makower uk
The Henley Studio

Free Pattern Download Available

1384 Broadway New York, NY 10018
Tel. (800) 223-5678 • andoverfabrics.com

Trick of the Light Quilt



Introducing Andover Fabrics new collection: **Catnap** by Lizzy House

Quilt designed by Lizzy House

Quilt finishes 60" x 80"

48 Blocks: 10" x 10"

What fun you will have arranging the eye-CATching prints in this throw-size quilt. There are leaping cats, butterflies, and tiny mice to engage the viewer. The quilt will appeal to cat lovers and anyone who loves a bit of whimsy. Because there is only one patch, and two patches make a block, you can make quick work of the piecing. The design comes with the diagonal placement of light and dark fabrics.

Fabric Requirements

			Yardage	Fabric
Fabric A	blocks, binding		1 yard	5475-DP
12 Prints	blocks		fat ¼ yard ea.	
	4116-B3	4116-B4	4116-C	4116-LO
	4116-O2	5475-O4	5475-T2	5677-NB
	7341-G	7343-G		
13 Prints	blocks		⅓ yard ea.	
	7340-G	7340-L	7340-N	7342-GY
	7342-LE	7342-NY	7343-LN	7344-GL
	7344-LC	7344-NR	5677-LY	
4 Prints	blocks		¾ yard ea.	
	4116-WW	5475-L	7341-LN	7341-NL
Backing			5 yards	7341-LN

Cutting Directions

Note: *Read assembly directions before cutting patches. All measurements are cut sizes and include ¼" seam allowances. A fat ¼ is an 18" x 20"-22" cut. WOF designates the width of fabric from selvedge to selvedge (approximately 42" wide).

Fabric A Cut (8) strips 2½" x WOF for binding
*Cut (1) square 10⅞" x 10⅞", cut in half diagonally once to make 2 half-square triangles

12 Prints *Cut (1) square 10⅞" x 10⅞" from each, cut in half diagonally

13 Prints *Cut (2 or 3) squares 10⅞" x 10⅞" from each, cut in half diagonally

4 Prints *Cut (4) squares 10⅞" x 10⅞" from each, cut in half diagonally

Backing Cut (2) panels 34" x 88", pieced to fit quilt top with overlap on all sides

Making the Quilt

1. Refer to the quilt photograph and Quilt Diagram to count how many triangles are needed of each fabric if you want your quilt to look just like the one shown. However, feel free to cut more or fewer of each fabric to make your quilt one-of-a-kind. The more squares/triangles you cut, the more flexibility there will be to design a unique creation. Yardage is sufficient to cut more squares and triangles than needed. Plan on having leftover triangles.

You need a total of 96 half-square triangles. Note that you need more light fabric triangles than medium/dark ones to make the quilt shown.

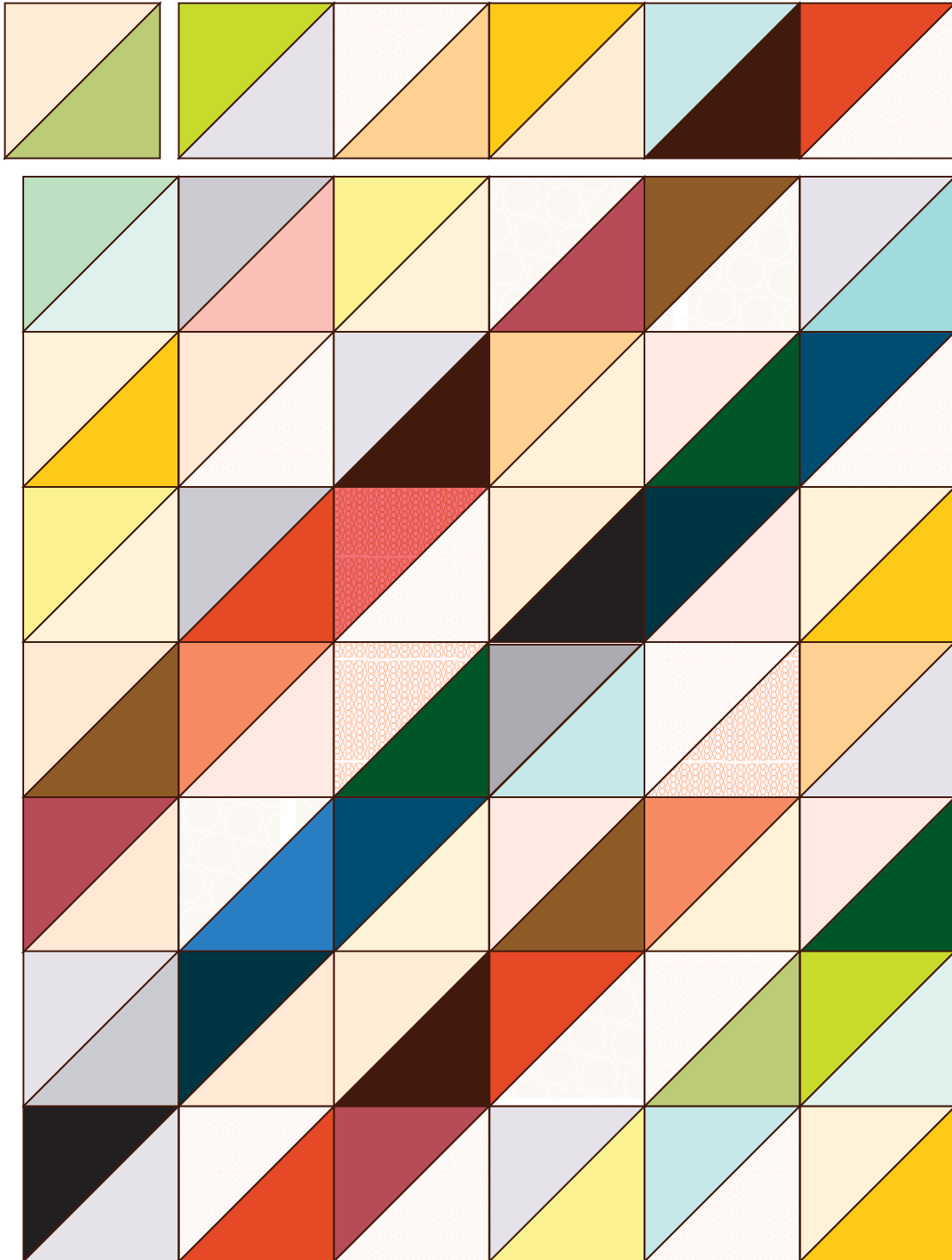
2. Referring to the Quilt Diagram, arrange the triangles in pairs, positioning 6 pairs in each of 8 horizontal rows. Be sure that the pairs are oriented as shown. Once you are pleased with the color arrangement, join pairs of triangles into blocks. Each block should measure 10½" x 10½". If your blocks don't end up exactly that size, the main consideration is that they are all the same size. Make 48 blocks.

3. Join the pieced blocks into 8 rows of 6 blocks each. Press seam allowances in opposite directions in alternating rows. Join the rows.

Trick of the Light Quilt

Finishing the Quilt

4. Layer the quilt with batting and backing and baste. Quilt in the ditch around block patches. Quilt around the printed motifs in the blocks. Bind to finish the quilt.



Quilt Diagram

Catnap

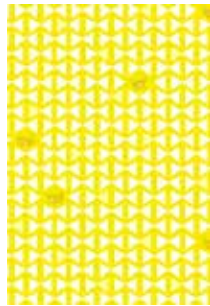
FABRICS BY LIZZY HOUSE



7340-G



7341-G



7342-GY



7343-G



7344-GL



5677-GT



7340-L



7341-LN



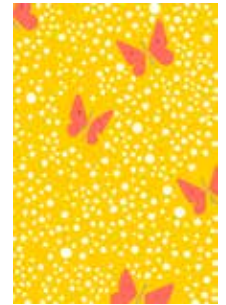
7342-LE



7343-LN



7344-LC



5677-LY



7340-N



7341-N



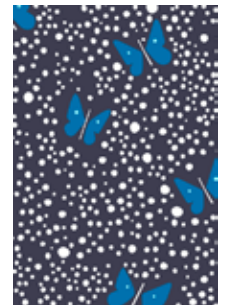
7342-NY



7343-NE



7344-NR



5677-NB

Blend with fabrics from Pearl Bracelets by Lizzy House



4116-B3



4116-B4



4116-C



4116-G1



4116-LO



4116-O2



4116-WW

Blend with fabrics from Hello Pilgrim by Lizzy House



5475-DP



5475-L



5475-O4



5475-T2

All fabrics are used in quilt pattern. Fabrics shown are 15% of actual size.

andover

•
•
•
•
•
makower uk
The Henley Studio

Free Pattern Download Available

1384 Broadway New York, NY 10018
Tel. (800) 223-5678 • andoverfabrics.com