

Dazzle

FABRICS BY KIM SCHAEFER



Quilt Design: **Kim Schaefer**

Quilt Size: **80" x 100"**

andoverfabrics.com



About Dazzle

Dazzle is a whimsical, contemporary folk art collection consisting of seven different prints in bright, clear colors. The focal fabric has 19 different 6" motifs that can be used as they are or fussy cut and used as appliques. I hope this happy collection inspires you to create some fun quilts for friends and family to enjoy. — *Kim Schaefer*

andover

makower uk
The Henley Studio

Free Pattern Download Available

1384 Broadway New York, NY 10018
Tel. (800) 223-5678 • andoverfabrics.com

Dazzle Quilt



Introducing Andover Fabrics new collection: **DAZZLE** by Kim Schaefer

Quilt designed by Kim Schaefer

Quilt finishes 80" x 100"

What fun you will have working with these contemporary prints. Arrange the simple background rectangles in any way that suits you, and then add the bold, fusible appliqué to complete the bed-size quilt.

Cutting Directions

Note: Read assembly directions before cutting patches. Yardage is sufficient to cut more or fewer rectangles from each medium print. All measurements are cut sizes and include 1/4" seam allowances. A fat 1/4 is an 18" x 21" cut. Borders are cut the exact lengths required plus 1/4" seam allowances. WOF designates the width of fabric from selvedge to selvedge (approximately 42" wide).

Fabric A

Fussy-cut (11) flower centers (see Step 3)

Fabric B

Cut (2) side borders 5 1/2" x 90 1/2", cut crosswise and pieced
Cut (2) top/bottom borders 5 1/2" x 80 1/2", cut crosswise and pieced

Fabric C

Cut (2) side borders 1 1/2" x 80 1/2", cut crosswise and pieced
Cut (2) top/bottom borders 1 1/2" x 62 1/2", cut crosswise and pieced

Fabric D

Cut (152) squares 2 1/2"

Fabric E

Cut (152) squares 2 1/2"

Fabric F

Cut (10) strips 2 1/2" x WOF for binding
Cut (12) flower petals

7 Med. Prints From each:

Cut (17-18) rectangles 4 1/2" x 10 1/2" (120 total)

4 Fat 1/4's From each:

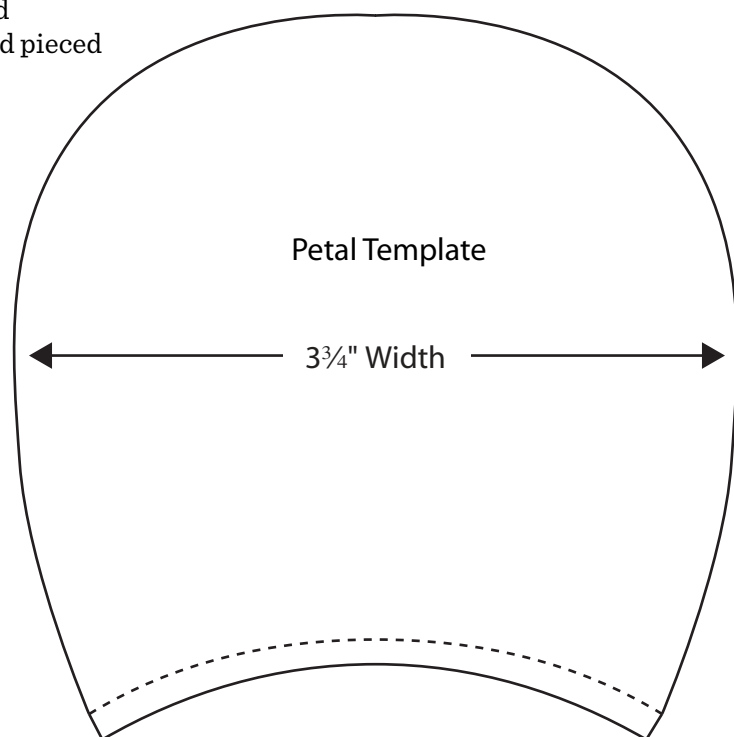
Cut (12) petals from each of 3 fabrics
Cut (18) petals from 1 fabric

Backing

Cut (2) panels 37" x 88", pieced to fit quilt top with overlap on all sides

Fabric Requirements

		Yardage	Fabric
Fabric A	flower centers	1 yard	7494-K
Fabric B	outer border	1 3/4 yards	7498-K
Fabric C	inner border	3/8 yard	7501-K
Fabric D	check border	3/4 yard	3135-K
Fabric E	check border	3/4 yard	3135-L3
*Fabric F	petals	1 yard	3135-T5
7 Med. Prt.	setting	3/4 yard each	7495-K
		7495-X	7496-K 7496-P
		7496-T	7497-G 7497-O
4 Fat 1/4's	petals	fat 1/4 yard ea.	7500-E
		7500-P	7501-Y 3135-O3
*Backing		7 1/2 yards	7499-0
	*includes binding		



Dazzle Quilt

Making the Quilt

1. Refer to the Quilt Diagram. On a large flat surface, arrange the $4\frac{1}{2}$ " x $10\frac{1}{2}$ " rectangles in 6 vertical rows of 20 rectangles each. Stand back to be certain that no fabric touches itself. Once you are satisfied with the arrangement, join the patches into rows. Press seam allowances in opposite directions in alternating rows. Join the rows. Press the seam allowances open or in one direction.
2. Trace 66 petals onto the paper side of paper-backed fusible web. Following manufacturer's instructions, fuse traced patterns to the wrong side of the appropriate fabrics. Cut out petals on the drawn lines.
3. From Fabric A, choose 11 printed circles for the flower centers. Following manufacturer's instructions, center and fuse a 7" circle of fusible webbing to the wrong side of each chosen circle. (The web circles are larger than the printed circles.) Cut out the flower centers at the edge of the printed circles. Refer to the quilt photograph to position 6 petals and a circle for each flower. The center circles should overlap the base of the petals. Fuse each patch to the quilt, following manufacturer's instructions. Finish the edges with a decorative machine stitch using contrasting thread, or use an invisible thread with a blind appliqué machine stitch.
4. Sew Fabric C borders to the sides, and then to the top.
5. Join 41 Fabric D and 41 Fabric E $2\frac{1}{2}$ " squares to make a checkerboard border, noting placement of the black and white squares. Sew to the side of the quilt. Repeat for the other side. Join 35 white and 35 black squares to make a short border. Sew to the top of the quilt. Repeat for the bottom.
6. Sew Fabric B borders to the sides, and then to the top.

Finishing the Quilt

7. Layer the quilt with batting and backing and baste. Quilt in the ditch around borders. Quilt around the appliquéd flowers. Quilt the background rectangles as you wish. Bind to finish the quilt.



Quilt Diagram

Dazzle

FABRICS BY KIM SCHAEFER



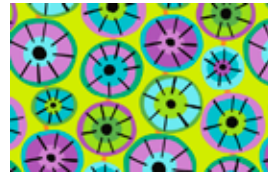
7494-X



7495-K*



7495-X*



7497-G*



7497-O*



7494-K*



7498-K*



7498-X



7499-E



7499-O*



7500-E*



7500-P*



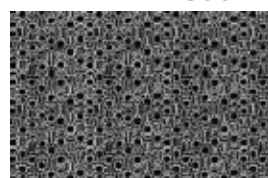
7496-K*



7496-P*



7496-T*

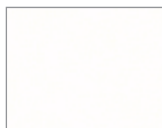


7501-K*



7501-Y*

Blend with fabrics from Tic Tac by Kim Schaefer



3135-L3*



3135-Y6



3135-R6



3135-E1



3135-O3*



3135-T5*



3135-P4



3135-K*

*Indicates fabrics used in quilt pattern. Fabrics shown are 10% of actual size.

andover

makower uk
The Henley Studio

Free Pattern Download Available

1384 Broadway New York, NY 10018
Tel. (800) 223-5678 • andoverfabrics.com