

Dimple Dreams

DIMPLES FABRICS BY GAIL KESSLER

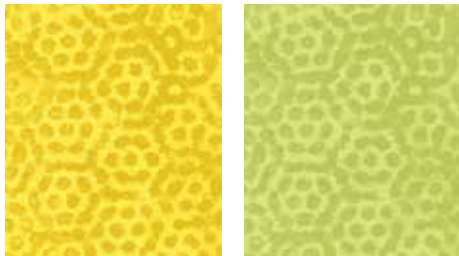


Dimple Dreams Quilt Design by:
Barbara Persing

Made and Machine Quilted by:
Barbara Persing

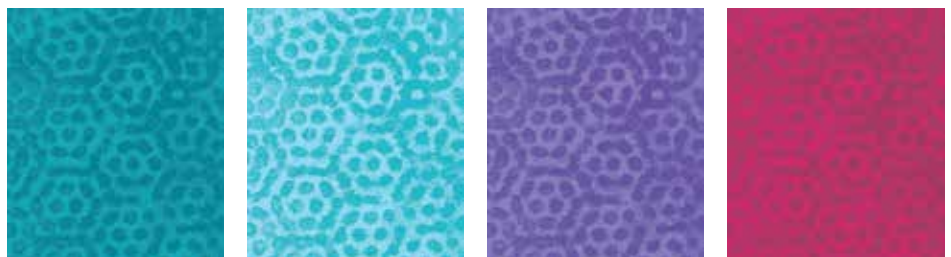
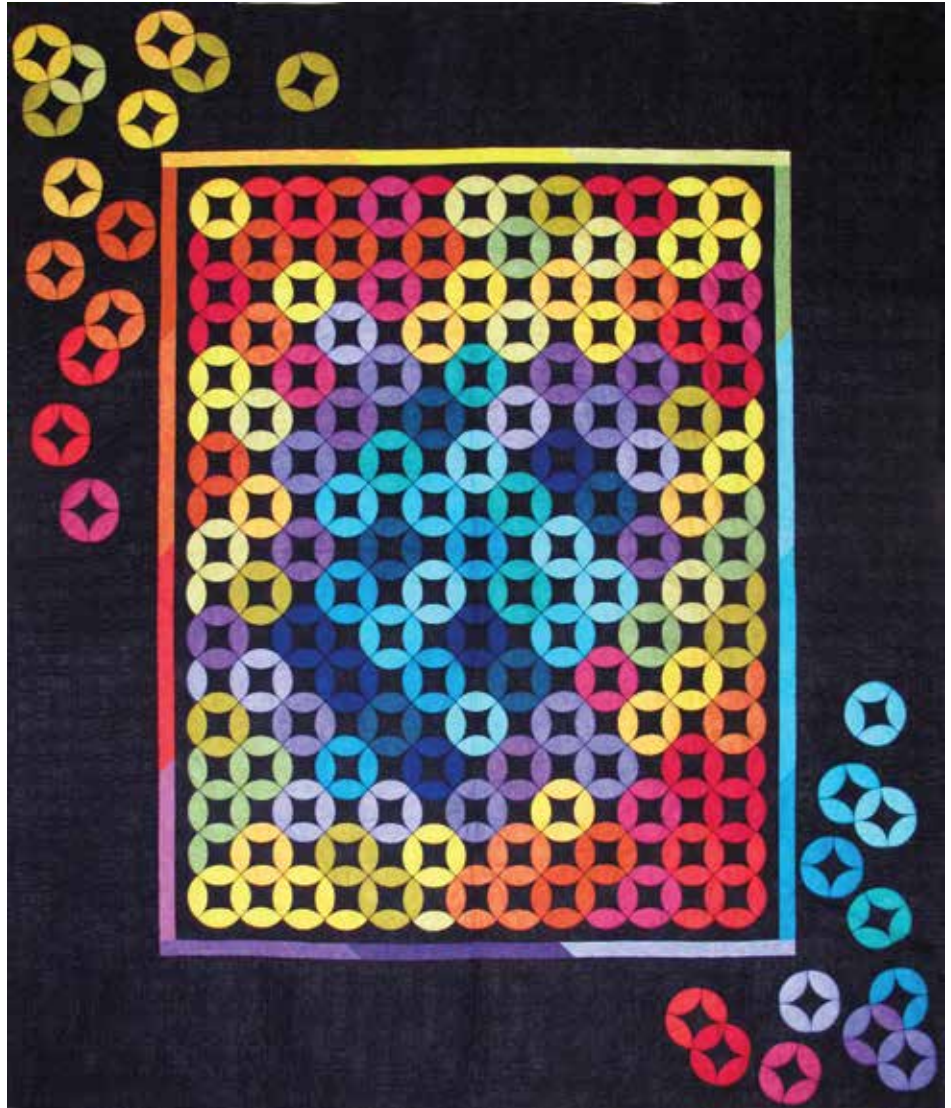
Quilt Size: **86½" x 102"**

andoverfabrics.com



About Dimples

As one of Andover's most popular blender fabrics, the magical texture of Dimples works with every style of quilt making or sewing theme, from traditional and muted to bold and bright. This universal blender comes in a vast array of colors and has become a favorite go-to fabrics because of the just-right texture and movement it brings to every project.



andover

•
•
•
•
•
makower uk
The Henley Studio

Free Pattern Download Available

1384 Broadway New York, NY 10018
Tel. (800) 223-5678 • andoverfabrics.com

Dimple Dreams Quilt



Introducing Andover Fabrics new collection: **Dimples** by Gail Kessler

Quilt designed and made by Barbara Persing

Quilt finishes 86½" x 102"

111 4-Patch Blocks: 5½" x 52"

You may just find the rainbow connection when you make this fusible appliqué quilt. As the Muppet song says, rainbows are "sweet dream reminders," and you or your honey will surely have sweet dreams sleeping under this beautiful rainbow-colored quilt. The quilt is an ideal opportunity to use the decorative stitches on your sewing machine to finish the fused appliqué.

Cutting Directions

Note: Read assembly directions before cutting patches. All measurements are cut sizes and include ¼" seam allowances. A fat ⅛ is a 9" x 20"-22" cut of fabric. A fat ¼ is an 18" x 20"-22" cut. Borders are cut the exact lengths required plus ¼" seam allowances. WOF designates the width of fabric from selvedge to selvedge (approximately 42" wide).

Fabric A Cut (67) Templates
Cut (1) border strip 2" x 21"

Fabric B Cut (32) Templates
Cut (1) border strip 2" x 21"

Fabric C Cut (29) Templates
Cut (1) border strip 2" x 21"

Fabric D Cut (23) Templates
Cut (1) border strip 2" x 21"

Fabric E Cut (39) Templates

Fabric F Cut (30) Templates
Cut (1) border strip 2" x 21"

Fabric G Cut (30) Templates
Cut (1) border strip 2" x 21"

Fabric H Cut (38) Templates

Fabric I Cut (29) Templates
Cut (1) border strip 2" x 21"

Fabric J Cut (29) Templates

Fabric K Cut (29) Templates
Cut (1) border strip 2" x 21"

Fabric L Cut (33) Templates
Cut (1) border strip 2" x 21"

Fabric M Cut (30) Templates
Cut (1) border strip 2" x 21"

Fabric N Cut (28) Templates
Cut (1) border strip 2" x 21"

Fabric O Cut (19) Templates

Fabric P Cut (20) Templates
Cut (1) border strip 2" x 21"

Fabric Q Cut (23) Templates
Cut (1) border strip 2" x 21"

Fabric R Cut (16) Templates

Fabric S Cut (24) Templates

Fabric T Cut (1) border strip 2" x 21"

Fabric Requirements

	Yardage	Fabric	
Fabric A	blocks, border	⅝ yard	1867-Y20
Fabric B	blocks, border	fat ¼ yard	1867-Y19
Fabric C	blocks, border	fat ¼ yard	1867-LG
Fabric D	blocks, border	fat ¼ yard	1867-VL
Fabric E	blocks	⅜ yard	1867-G31
Fabric F	blocks, border	fat ¼ yard	1867-O
Fabric G	blocks, border	fat ¼ yard	1867-O12
Fabric H	blocks	⅜ yard	1867-E21
Fabric I	blocks, border	fat ¼ yard	1867-R8
Fabric J	blocks	fat ¼ yard	1867-R1
Fabric K	blocks, border	fat ¼ yard	1867-P16
Fabric L	blocks, border	fat ¼ yard	1867-P15
Fabric M	blocks, border	fat ¼ yard	1867-P8
Fabric N	blocks, border	fat ¼ yard	1867-T9
Fabric O	blocks	fat ¼ yard	1867-T1
Fabric P	blocks, border	fat ¼ yard	1867-T15
Fabric Q	blocks, border	fat ¼ yard	1867-T4
Fabric R	blocks	fat ¼ yard	1867-T19
Fabric S	blocks	fat ¼ yard	1867-B17
Fabric T	border	fat ⅛ yard	1867-E2
*Fabric U	border, blocks	5¼ yards	1867-K1
Backing		8 yards	1867-K1

***Includes binding**

Fabric U Cut (2) top/bottom borders
15" x 87", cut lengthwise
Cut (2) side borders
15" x 73½", cut lengthwise
Cut (111) squares 6" x 6"
for block background
Cut (7) squares 9¼" x 9¼",
cut in half diagonally twice
to make 28 quarter-square
setting triangles (to be
trimmed later)
Cut (2) squares 5" x 5", cut in
half diagonally once to
make 4 half-square
corner triangles (to be
trimmed later)

Backing Cut (3) panels 37" x 95",
pieced to fit quilt top with
overlap on all sides

Dimple Dreams Quilt

Making and Assembling the Quilt

1. If you wish to duplicate the quilt as shown, cut the number of appliqué templates listed for each fabric. If you wish to design your own quilt, cut 4 matching templates for each block and 1 for each side setting triangle. (Hint: A fat $\frac{1}{4}$ yard is sufficient to cut a total of 1 border strip and 35 Templates.) Cut templates for the border as listed or as you design it. The quilt requires a total of 568 appliqué patches.
2. The templates are fused to each background black square and side setting triangle. Trace the templates onto the paper side of paper-backed fusible web. Following manufacturer's instructions, fuse traced patches to the wrong side of the appropriate fabrics. Cut out shapes on the drawn lines.
3. Make a drawing of the entire block pattern, including seam allowances, on acrylic plastic to use as a guide. Position 4 patches on each 6" black square. Be careful that the shapes don't cross into the seam allowance. Fuse in place. Leave the edges of the colored patches as they are, or finish the edges with a decorative machine stitch using matching or contrasting thread. Repeat on all black squares.

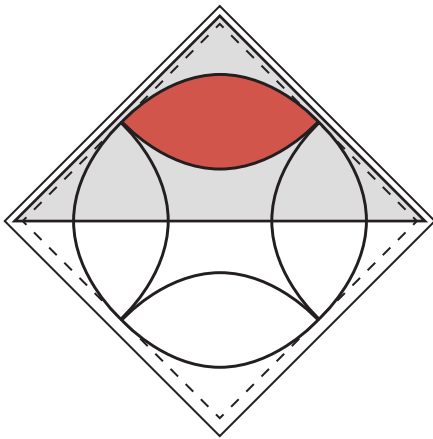


Diagram 1

4. Place the full-size block guide from Step 3 on top of a black quarter-square setting triangle, aligning the outer edges (Diagram 1). Position an appliqué patch underneath the guide. Remove the guide, and fuse the patch in place. Finish the edges as you did on the blocks. Repeat on all side triangles.

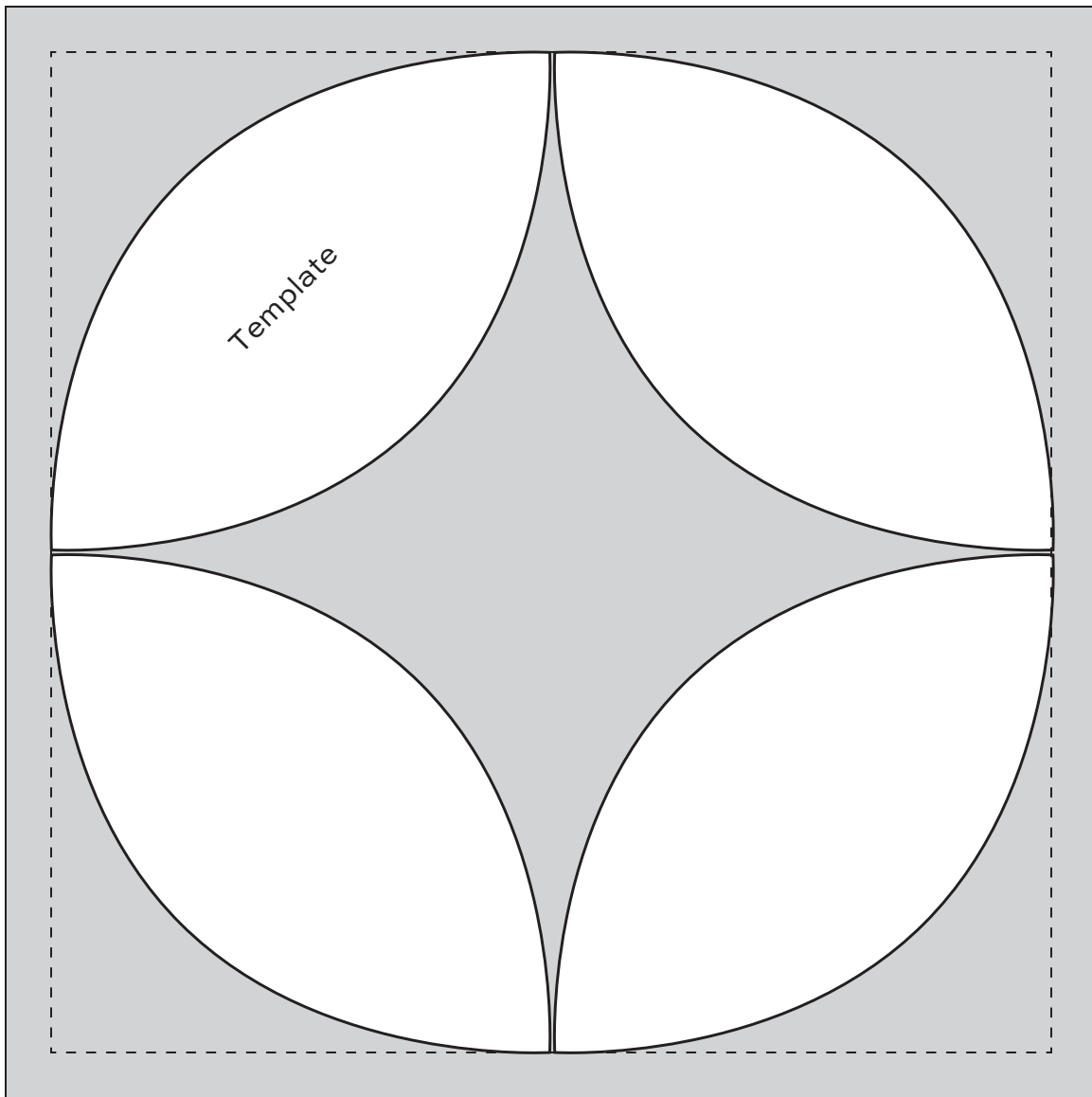
5. Referring to the Quilt Diagram, arrange the blocks in diagonal rows. Position an appliquéd side setting triangle on the ends of each row, rotating as shown. Sew the blocks and triangles in rows. Join the rows. Sew a 5" black half-square triangle to each corner. Using a large acrylic ruler to ensure square corners, trim the parts of the black patches that stick out from the quilt, leaving a generous $\frac{1}{4}$ " seam allowance.
6. Referring to the Quilt Diagram, arrange 4 border strips end to end along the side of the quilt. Adjust the lengths of any of the borders as you wish before sewing. Sew the strips end to end in diagonal seams to make a side border. Sew to the quilt. Trim. Repeat for the other side. Join 3 border strips end to end to make the top border. Sew to the quilt. Repeat for the bottom border.
7. If you plan to finish the edges of the border's appliqué motifs with decorative stitching, we suggest that you stitch them to the border strips before sewing borders to the quilt.

Prepare the border appliqué patches for fusing if you have not already done so. Note that some of the patches are placed so that there are 7 or 10 patches that form overlapping "rings." Refer to the Quilt Diagram for placement. Using the acrylic block guide, position the patches in groups of 4, 7, or 10 on the borders. Once you are pleased with the positioning, fuse in place. Finish edges as you did the appliqué in the blocks.

8. Sew the $73\frac{1}{2}$ " black borders to the sides. Sew the 87" black borders to the top and bottom.

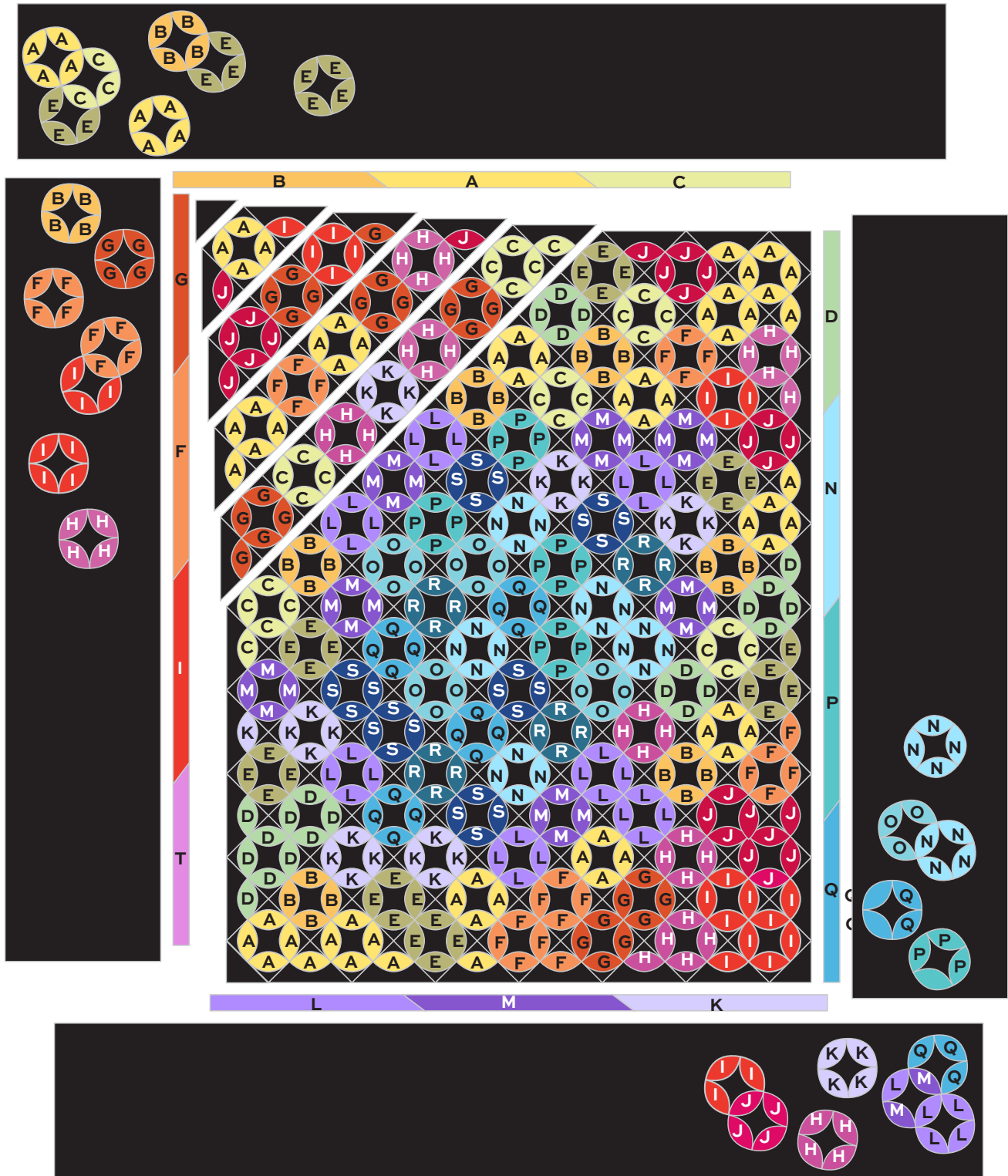
Finishing the Quilt

9. Layer the quilt with batting and backing and baste. Quilt in the ditch between blocks. Quilt around the appliqué motifs in the border. Quilt the border background in a simple overall motif, perhaps echoing the shapes of the appliqué. Bind to finish the quilt.



Block Pattern

Dimple Dreams Quilt



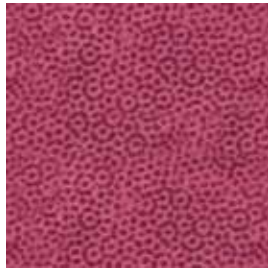
Quilt Diagram

Dimple Dreams

DIMPLES FABRICS BY GAIL KESSLER



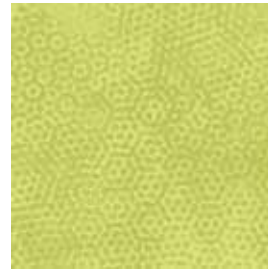
1867-B17



1867-E2



1867-E21



1867-G31



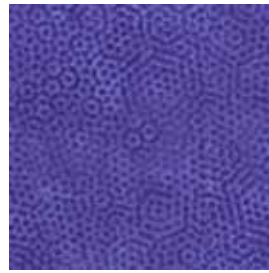
1867-LG



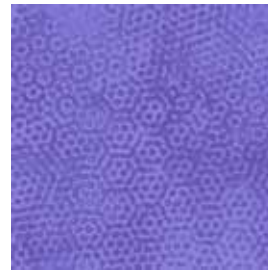
1867-O



1867-O12



1867-P8



1867-P15



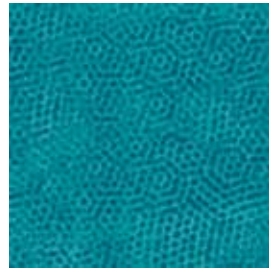
1867-P16



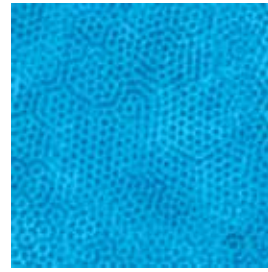
1867-R1



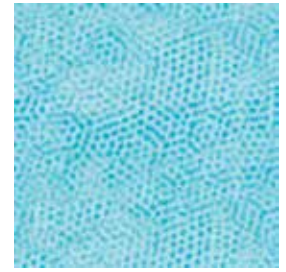
1867-R8



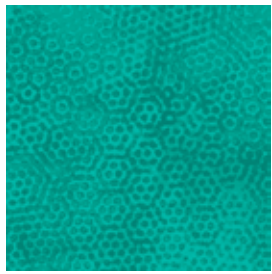
1867-T1



1867-T4



1867-T9



1867-T15



1867-T19



1867-VL



1867-Y19



1867-Y20



1867-K1

All fabrics are used in quilt pattern. Fabrics shown are 50% of actual size.

andover



makower uk
The Henley Studio

Free Pattern Download Available

1384 Broadway New York, NY 10018
Tel. (800) 223-5678 • andoverfabrics.com