

Haunting

BY RENÉE NANNEMAN



About Haunting

A Haunting we shall go ...
Jack-O'-Lanterns lit with the moonlight glows
A wise hoot owl, high up in the tree,
Sending out a warning, just for you and me.

Bats in the belfry, witches in the air,
The old black cat doesn't seem to care.
Shooting stars falling, cause such a fright,
Dare we go Haunting on Halloween night?

— Renée Nanneman

Haunting Quilt designed by: **Renée Nanneman** • Quilt Size: **51" x 69"** • andoverfabrics.com

andover

•
• **makower uk**
•
• Concord Fabrics UK Ltd

Free Pattern Download Available

1384 Broadway New York, NY 10018
Tel. (800) 223-5678 • andoverfabrics.com

Haunting Quilt



Introducing Andover Fabrics new collection: **HAUNTING** by Renée Nanneman

Quilt designed by Renée Nanneman

Quilt finishes 51" x 69"

12 Block Y: 9" x 9"

6 Block Z: 9" x 9"

This fun quilt conjures up things that go bump in the night, including grinning pumpkins, bats on the wing, and arched black cats. What an easy pattern to make to celebrate the season. Some fused appliqué adds to the nighttime charm.

Cutting Directions

Note: Read assembly directions before cutting patches. All measurements are cut sizes and include 1/4" seam allowances. A fat 1/8 is a 9" x 20"-22" cut of fabric. A fat 1/4 is an 18" x 20"-22" cut. WOF designates the width of fabric from selvedge to selvedge (approximately 42" wide).

Fabric A

Cut (9) squares 9 1/2"

Fabric B

Cut (8) squares 9 1/2"

Fabric C

Cut (7) strips 2 1/2" x WOF for straight binding OR cut a 27" square for bias binding (see step 6)

6 Fat 1/4 Gold From each:

Cut (1) Big Star (6 total)

Cut (6) strips 2" x 9 1/2" (36 total)

Cut (5-6) squares 3 1/2" (32 total)

6 Gold From each:

Cut (6) strips 2" x 9 1/2" (36 total)

Cut (3) squares 3 1/2" (18 total)

13 Black From each:

Cut (1) Moon (12 total)

Cut (1) Little Star (12 total)

Cut (3) strips 2" x 9 1/2" (36 total)

Cut (2) squares 3 1/2" (26 total)

Backing

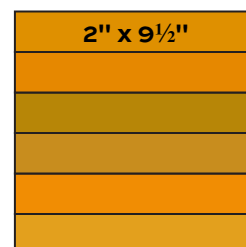
Cut (2) panels 39" x 59", pieced to fit quilt top with overlap on all sides

Fabric Requirements

		Yardage	Fabric
*Fabric A	setting	1 yard	8842-L
Fabric B	setting	5/8 yard	8842-O
Fabric C	binding	3/4 yard	5707-R
6 Fat 1/4 Gold	blocks, stars	fat 1/4 yard ea.	
	8844-Y	8846-O	8847-O
	8850-OY	8852-O	8853-O
6 Gold	blocks	1/8 yard ea.	
	8844-O	8848-O	8849-O
	8850-O	8851-O	8851-O1
13 Black	blocks, moon	fat 1/8 yard ea.	
	8844-K	8845-KO	8845-KP
	8846-K	8846-KN	8847-K
	8848-KO	8848-KP	8849-K
	8850-K	8852-K	8852-KO
	8853-K		
*Backing		3 1/2 yards	8842-L

Making the Quilt

1. Referring to the Block Y diagram, join 6 gold strips edge to edge. The block should measure 9 1/2" unfinished. If it does not, adjust your sewing and pressing. Make 12 Y blocks. Likewise, join 6 black strips for each Z block. Make 6 Z blocks.
2. If you choose to fuse the appliqué, trace the motifs onto the paper side of paper-backed fusible web. Following manufacturer's instructions, fuse traced patterns to the wrong side of the appropriate fabrics. Cut out parts on the drawn lines. Referring to the quilt photograph, position a moon and a small star on each Y block. Fuse each patch to the square, following manufacturer's instructions. Finish the edges with a decorative machine stitch using contrasting thread, or use an invisible thread with a blind appliqué machine stitch. Repeat to appliqué a star on each Block Z.



Block Y – Make 12



Block Z – Make 6

Haunting Quilt

- Referring to the Quilt Diagram, join 3 Block Y and 2 Fabric B squares to make a horizontal row. Make 4 rows alike. Join 3 Fabric A squares and 2 Block Z to make a row. Make 3 rows alike. Join the rows, alternating types.
- Follow the Quilt Diagram to arrange the 3½" squares around the quilt. Once you are satisfied with the arrangement, join 21 black and orange squares to make a side border. Sew to the side. Repeat for the opposite side. Join 17 squares to make the top border. Repeat for the bottom. Sew to the quilt.

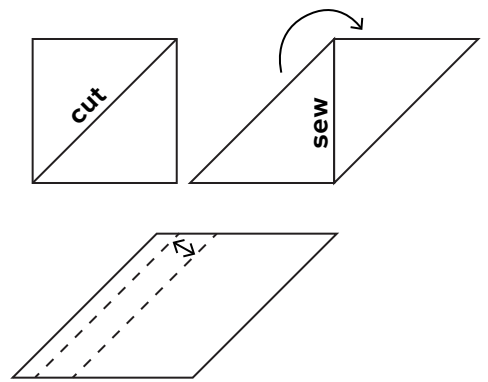
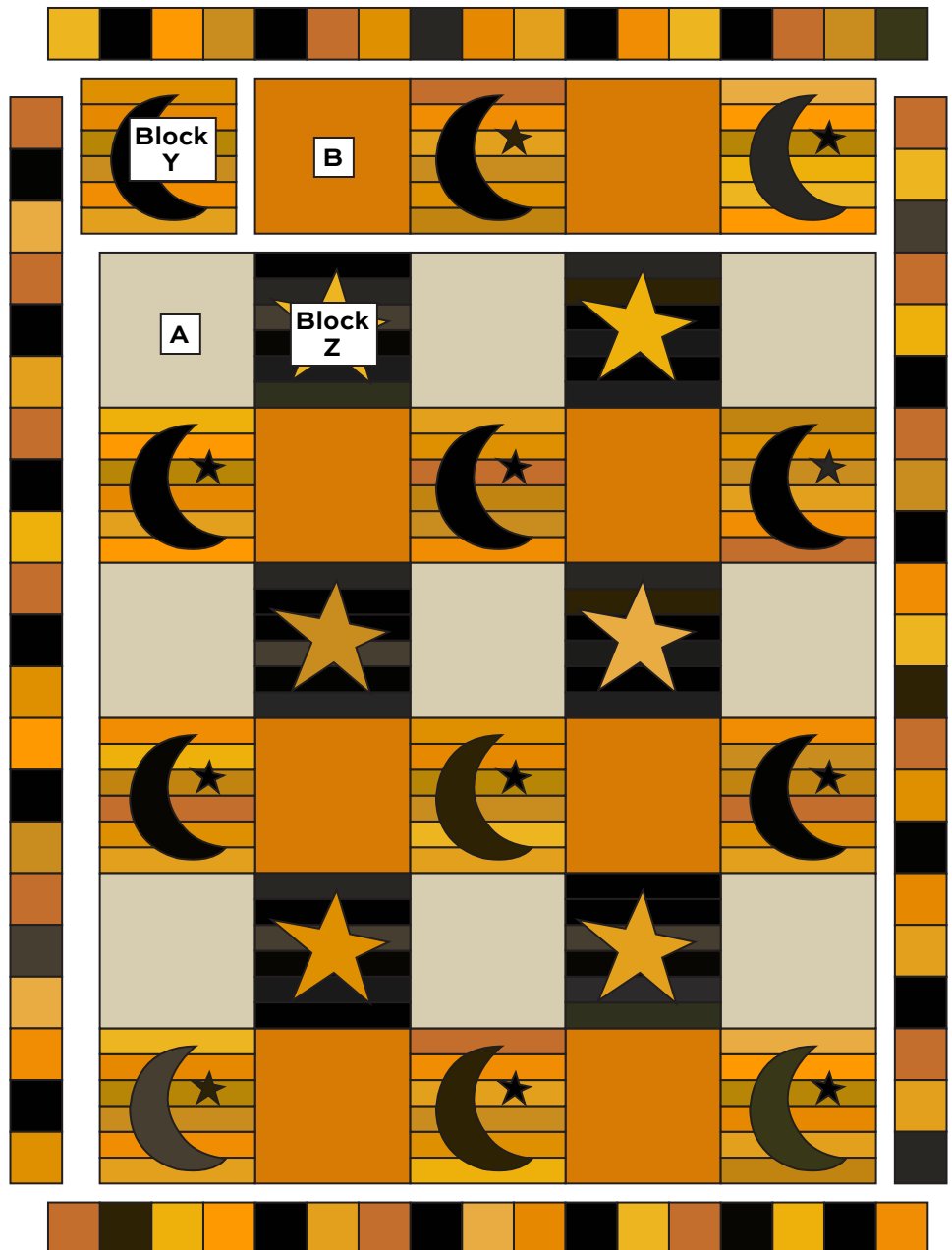


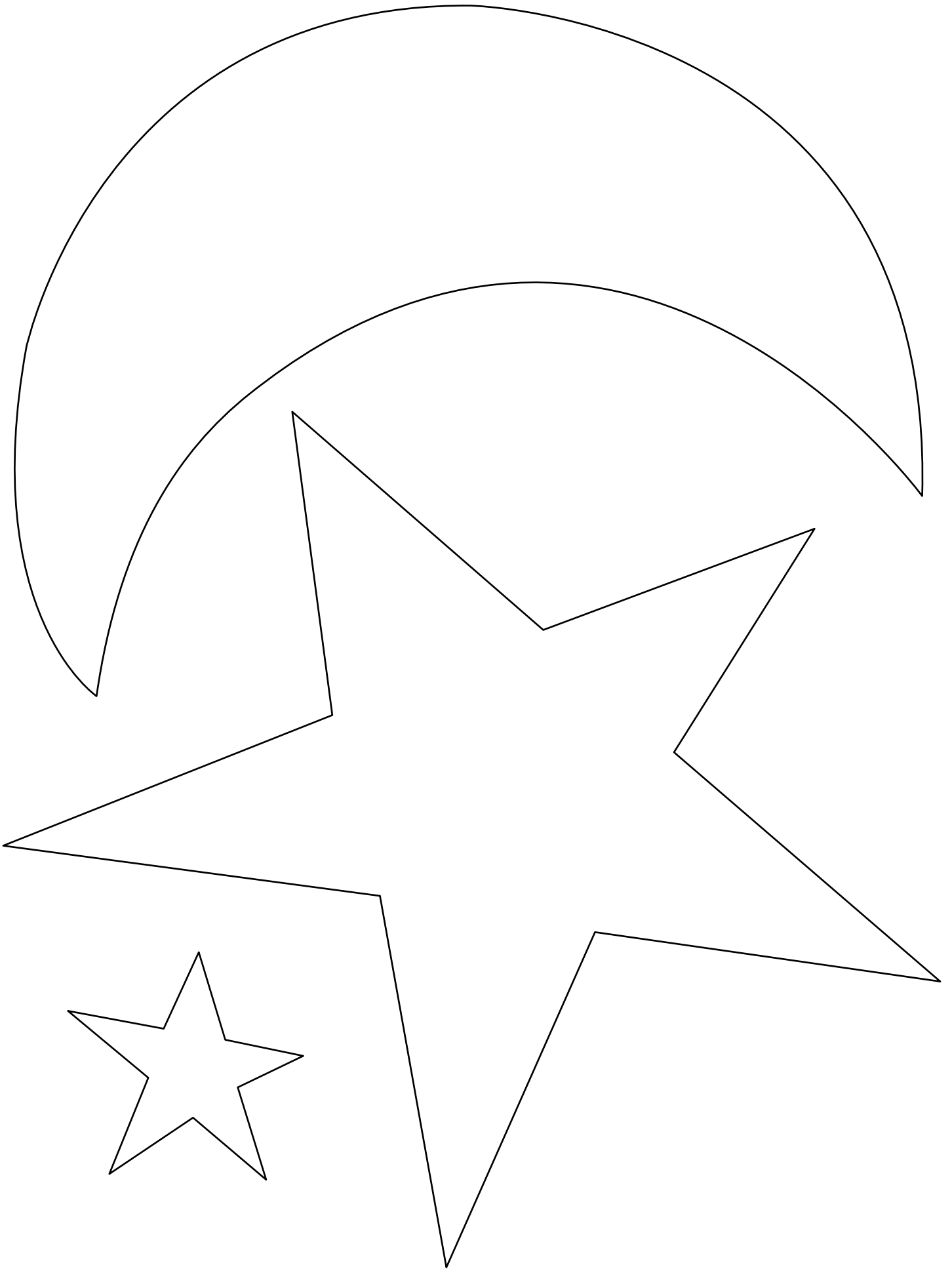
Diagram 1

Finishing the Quilt

- Layer the quilt with batting and backing and baste. Quilt in the ditch around borders and block patches. Quilt around the appliqué motifs and the printed fabrics as you wish.
- Bind to finish the quilt. If you wish to use bias binding as shown, follow these directions and Diagram 1. Cut the Fabric C 27" square in half diagonally. Shift the left triangle and sew it to the opposite side of the right triangle. Press the seam allowance in one direction. Cut 2½"-wide strips parallel to the edge as shown. Join the bias strips end to end and bind the quilt in the usual manner.



Quilt Diagram



Haunting

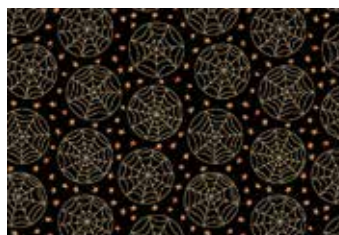
BY RENÉE NANNEMAN



8842-L*



8843-O



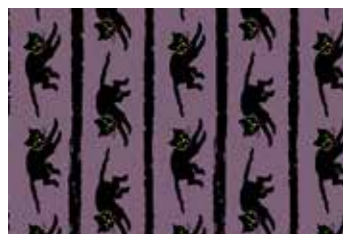
8844-K*



8845-KO*



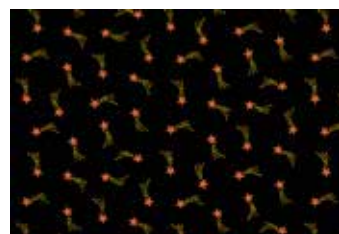
8842-N



8843-P



8844-O*



8845-KP*



8842-O*



8843-Y



8844-Y*



5707-K1*

Blend with fabrics from Harvest Moon by Renée Nanneman



8846-K*



8846-KN*



8846-O*



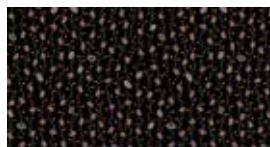
8847-K*



8847-O*



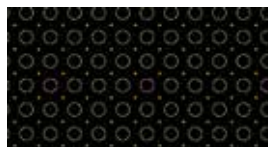
8848-KO*



8848-KP*



8848-O*



8849-K*



8849-O*



8850-K*



8850-O*



8850-OY*



8851-O*



8851-O1*



8852-K*



8852-KO*



8852-O*



8853-K*



8853-O*

*Indicates fabrics used in quilt pattern. Fabrics shown are 25% of actual size.

andover

• makower.uk
• Concord Fabrics UK Ltd

Free Pattern Download Available

1384 Broadway New York, NY 10018
Tel. (800) 223-5678 • andoverfabrics.com