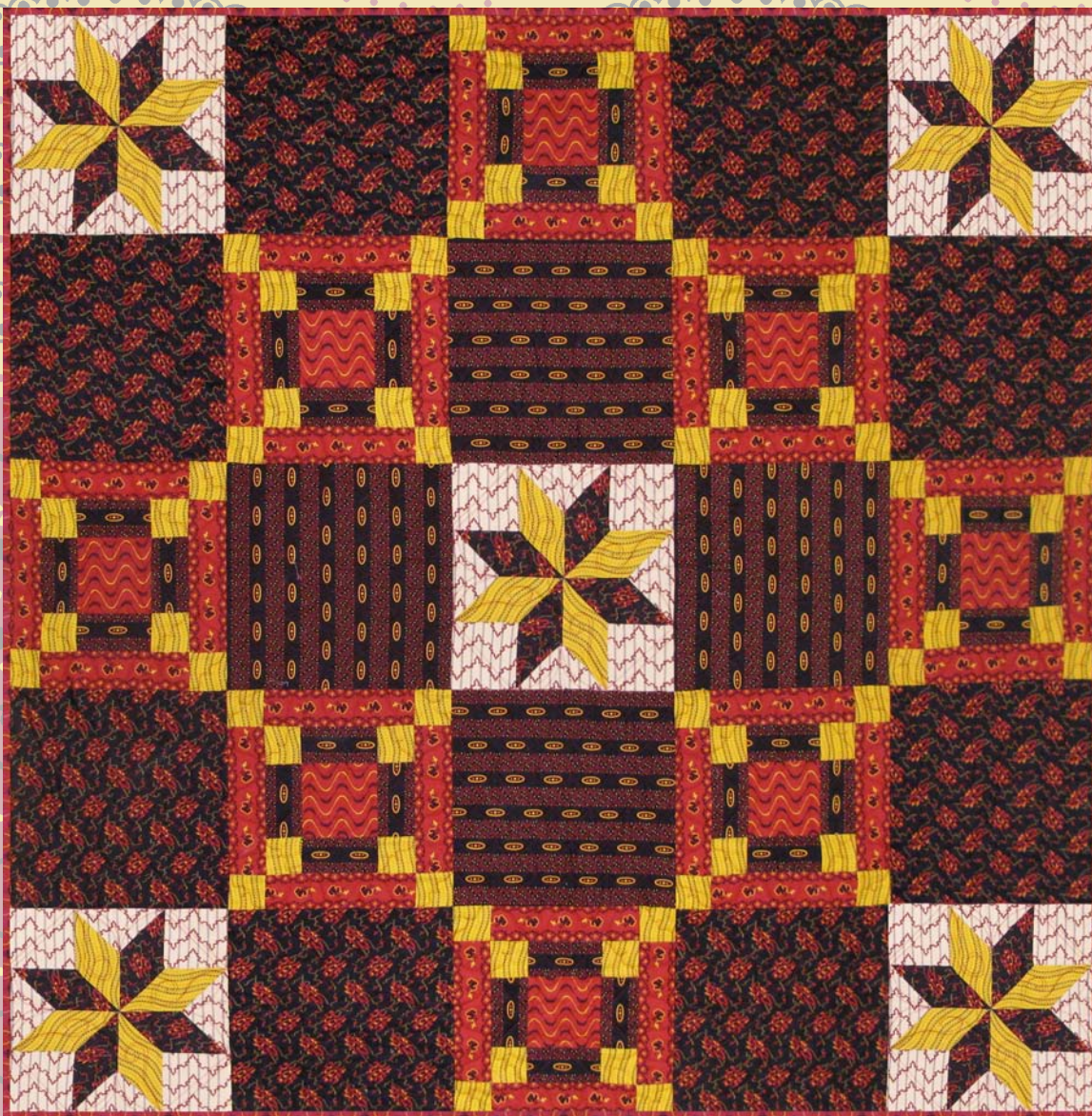


Introducing Andover Fabrics new collection:  
Keystone by Kathy Hall for the International Quilt Study Center

# Keystone



Keystone fabrics by Kathy Hall for  
the International Quilt Study Center  
Quilt designed by Gail Kessler  
Quilt made and machine quilted  
by Nannette Konstant of Sew Be It!  
Finished size: 60-1/2" x 60-1/2"



**makower uk**<sup>®</sup>

1384 Broadway · New York, NY 10018 · (800) 223-5678  
[www.andoverfabrics.com](http://www.andoverfabrics.com)

- Free Pattern Download Available -

# Keystone

*Introducing Andover Fabrics new collection:*

**Keystone by Kathy Hall** for the International Quilt Study Center

*Quilt designed by Gail Kessler. Quilt made and machine quilted by Nannette Konstant of Sew Be It!*

---

## Planning

Large areas of strong color make this quilt a perfect gift for the man in your life. At the same time, the beautiful stars and reproduction prints would look perfect in a living room or bedroom.

The LeMoyne Star blocks have many bias edges. To lessen any problems with these edges, we suggest that you press the wrong side of the fabric with spray starch or sizing prior to cutting.

Quilt finishes 60-1/2" x 60-1/2"

Number of blocks and finished sizes  
(5) LeMoyne Star Blocks 12" x 12"  
(8) Framed Square Blocks 12" x 12"

## Fabric Requirements and Cutting Directions

**4004-L 1/2 yard\* White/Red Ticking Print (LeMoyne Star blocks)**

Cut (20) 4" squares

Cut (5) 6-1/4" squares, cut in half twice diagonally to make 20 quarter-square triangles

**4003-Y 1 yard Yellow/Black Eyelet Stripe (blocks)**

Cut (20) Diamond Template patches, watching grainline (as marked on template)

Cut (64) 2-1/2" squares

**4000-K 1-3/4 yards Black/Red Electricity Print (LeMoyne Star blocks, squares)**

Cut (20) Diamond Template patches, watching grainline (as marked on template)

Cut (8) 12-1/2" squares

**4001-K 1 1/8 yards Black/Red/Yellow Ovals Print (Framed Square blocks)**

Cut (32) 2-1/2" x 4-1/2" strips lengthwise, centering ovals

Cut (4) 12-1/2" squares, fussy-cut so that one edge (parallel to stripes) is 1/4" outside red/black stripe

**4006-R 3/4 yard Red 3-Leaf Clover Stripe (Framed Square blocks)**

Cut (32) 2-1/2" x 8-1/2" strips lengthwise, centering clovers

**4005-R 1/4 yard\* Red/Black/Yellow Wave Print (Framed Square blocks)**

Cut (8) 4-1/2" squares

*\*Additional yardage needed for binding or backing (see below).*

**4004-L 4 yards White/Red Ticking Print (backing)**

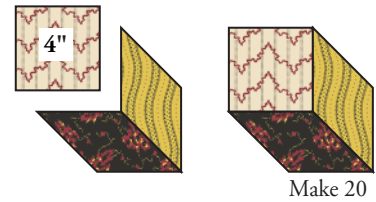
Cut and piece to fit quilt top with 4" overlap on all sides.

**4005-R 5/8 yard Red/Black/Yellow Wave Print (binding)**

Cut (7) 2-1/2" x width of fabric strips

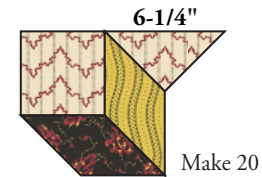
## Making and Assembling the Quilt

1. Referring to Diagram A, stitch together 1 red/white ticking 4" square and 1 each yellow/black eyelet print and black red electricity print Diamond Template to make pieced unit. Make 20. Sew 1 red/white ticking quarter-square triangle to each unit (Diagram B). Make 20.



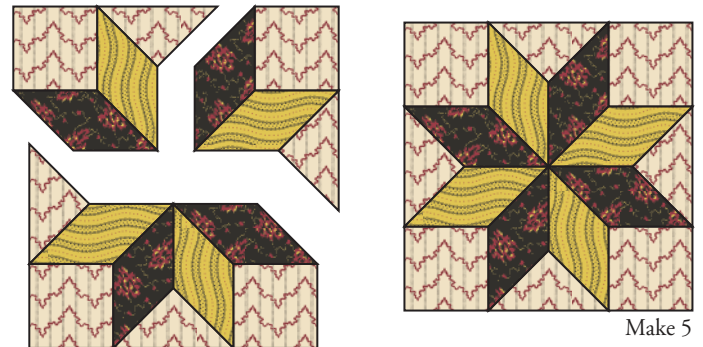
**Diagram A**

2. Closely watching orientation of red wave motif in ticking quarter-square triangles, stitch together 4 pieced units to make LeMoyne Star block (Diagram C). Make 5.



**Diagram B**

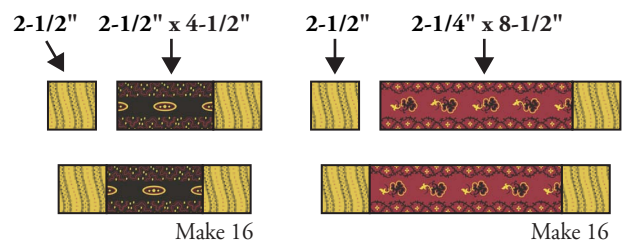
3. Watching orientation of eyelet stripes, sew 2 yellow/black eyelet 2-1/2" squares to ends of ovals print 2-1/2" x 4-1/2" strip to make small pieced strip (Diagram D). Make 16. In same manner, stitch remaining yellow/black eyelet squares to ends of red 3-leaf clover 2-1/2" x 8-1/2" strips to make large pieced strips. Make 16.



**Diagram C**

4. Referring to Diagram E, stitch ovals print 2-1/2" x 4-1/2" strips to sides of red/black/yellow wave print 4-1/2" squares (Diagram E). Sew small pieced strips to top and bottom. Sew red 3-leaf clover 2-1/2" x 8-1/2" strips to sides. Sew large pieced strips to top and bottom to make Framed Square block. Make 8.

5. **Note:** Refer to Quilt Diagram (next page) and photo throughout assembly, carefully positioning blocks and squares in orientations shown. To make 1st and 5th rows, sew together 2 LeMoyne Star blocks, 2 black/red electricity 12-1/2" squares, and 1 Framed Square block. To make 2nd and 4th rows, stitch together 2 black/red electricity 12-1/2" squares, 2 Framed Square blocks, and 1 ovals print 12-1/2" square. Finally, stitch together 2 Framed Square blocks, 2 ovals print 12-1/2" squares and 1 LeMoyne Star block to make 3rd row. Sew rows together in order shown.



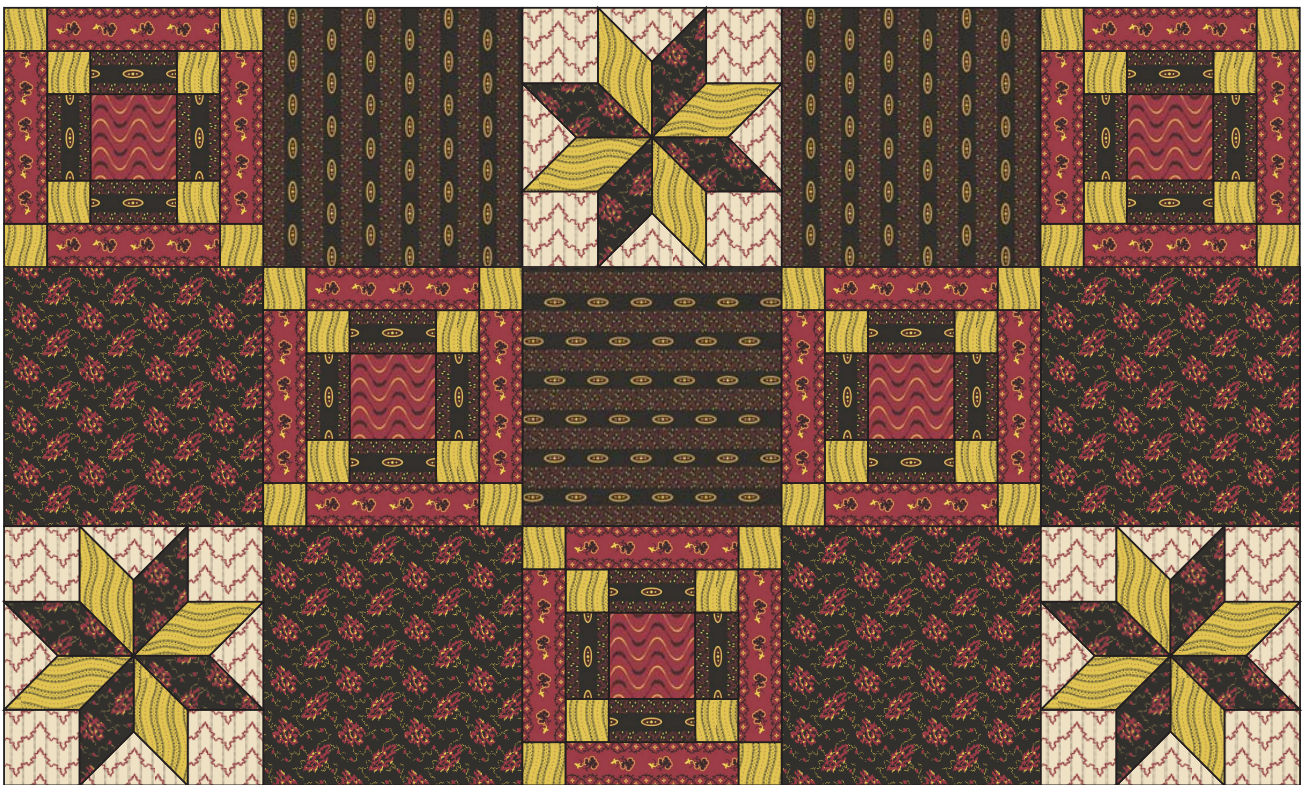
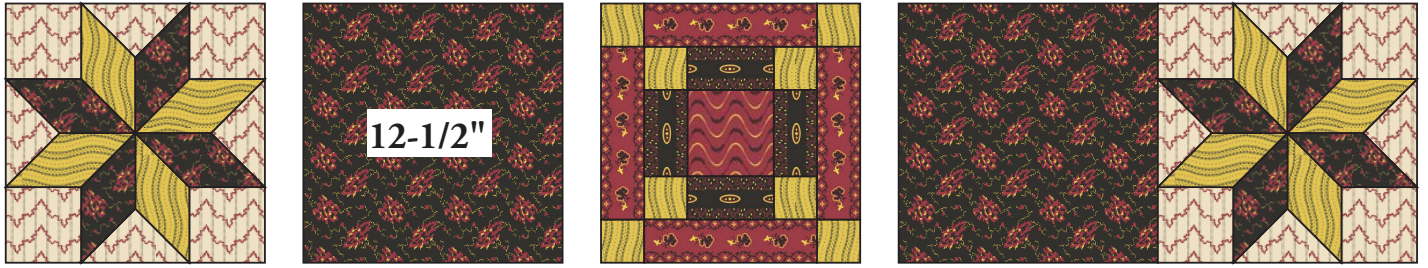
**Diagram D**

## Finishing the Quilt

6. Layer quilt with batting and white/red ticking backing. Quilt as desired. Bind with red/black/yellow wave print to finish quilt.



**Diagram E**

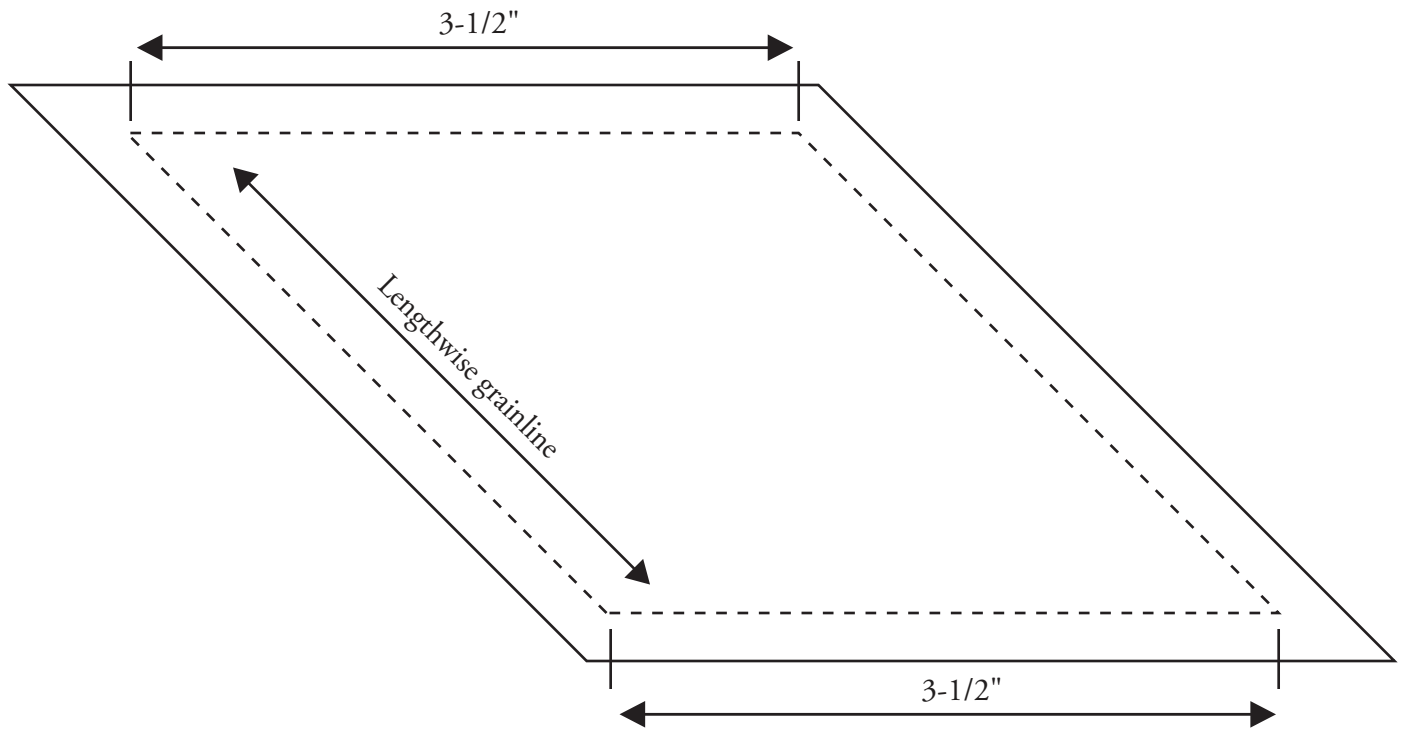


**Quilt Diagram**

## LeMoyne Star Template

When photocopying/printing, please be sure that the finished dimensions of templates are consistent with finished dimensions as labeled. Be sure that 1/4" seam allowance outside dashed lines is accurate; adjust as needed.

## Diamond Template

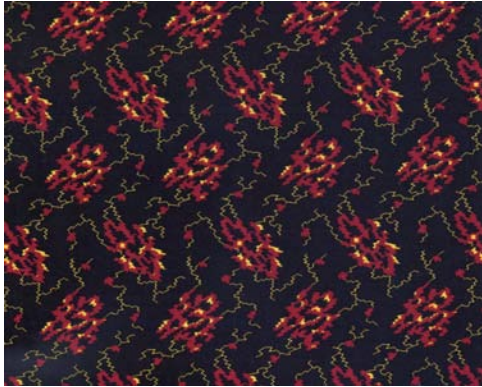


Cut 20 Yellow/black eyelet stripe  
Cut 20 Black/red electricity print

1384 Broadway  
 New York, NY 10018  
 (800) 223-5678  
 www.andoverfabrics.com

# Keystone

by Kathy Hall for the International Quilt Study Center



4000-K\*



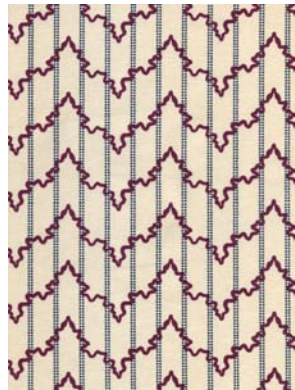
4001-K\*



4002-K



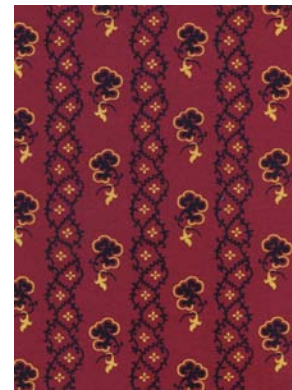
4003-Y\*



4004-L\*



4005-R\*



4006-R\*



3498-L2



4000-B



4001-B



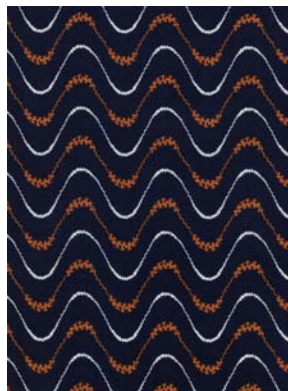
4002-B



4003-B



4004-B



4005-B



4006-B



3498-L2

\*Indicates fabric used in quilt pattern. Fabrics shown are 25% of actual size.