



# Patch Quilt

Finished size 47" x 47" (1.20 x 1.20m)

Designed by Lynne Goldsworthy of [lilysquilts.blogspot.com](http://lilysquilts.blogspot.com)

using the Patch collection from Makower UK [www.makoweruk.com](http://www.makoweruk.com)



**makower uk**  
*The Henley Studio*

118 Greys Road, Henley-on-Thames, Oxon RG9 1QW.  
Tel: +44(0)1491 579727  
e-mail [info@makoweruk.com](mailto:info@makoweruk.com) [www.makoweruk.com](http://www.makoweruk.com)

 **andover**



## FABRIC REQUIREMENTS

Fabric	Description	Amount	Cut
1523-S	Stripe	½ m / ½ yd	Twelve 3" squares Five 2 ½" WOF strips (binding)
1525-Y	Linea	Fat Eighth or one 3" WOF strip	Twelve 3" squares
1526/1	Dogs	Fat Quarter	One 16 ½" square
1527/1	Montage	Fat Quarter	Four 7 ½" squares
1528/1	Patch Allover	Fat Eighth or one 3" WOF strip	Twelve 3" squares
1529-S	Bones	3 m / 3 yds	Two equal lengths (backing)
1529-Y	Bones	Fat Quarter	Four 7 ½" squares
1530/1	Bandana Dogs	Fat Quarter	Four 7 ½" squares
2000 W01	White Spectrum	1 ¼ m / 1 ¼ yds	Sixteen 2 ½" WOF strips
Wadding			55" square / 1.4m sq

### Notes

- Press fabrics before cutting
- Seams are ¼" throughout unless stated otherwise
- Press seams away from the lighter fabrics throughout the pattern or as desired
- WOF = width of fabric, indicating a strip of fabric cut from selvedge to selvedge

### Cutting

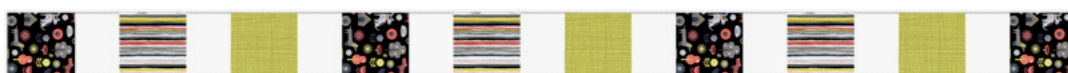
1. Cut the print fabrics as set out in the Fabric Requirements Schedule.
2. Cut seven of the white spectrum 2 ½" WOF strips into the following lengths:
  - Twenty-eight 3" strips;
  - Twelve 7 ½" strips; and
  - Four 16 ½" strips.
3. Sew the remaining nine strips of white spectrum together end to end then sub-cut into the following lengths:
  - Six 43 ½" strips; and
  - Two 47 ½" strips.

### Making the quilt top

1. This quilt top is made of eleven rows as set out below. To make any of these rows, follow the fabric placement in the main quilt image and press seams away from the print fabrics after each step.
  - Rows 1, 3, 5, 7, 9 and 11 - one white 2 ½" x 43 ½" strip
  - Rows 2 and 10 – ten print 3" squares and nine 2 ½" x 3" white strips;
  - Rows 4 and 8 – four print 3" squares, four print 7 ½" squares; two white 2 ½" x 3" strips and five white 2 ½" x 7 ½" strips; and
  - Row 6 - eight print 3" squares, four print 7 ½" squares; one print 16 ½" square, six white 2 ½" x 3" strips, two white 2 ½" x 7 ½" strips and four white 2 ½" x 16 ½" strips.

### Rows 2 and 10

2. Sash together ten print 3" squares using nine 2 ½" x 3" white strips and following the layout in the quilt image.



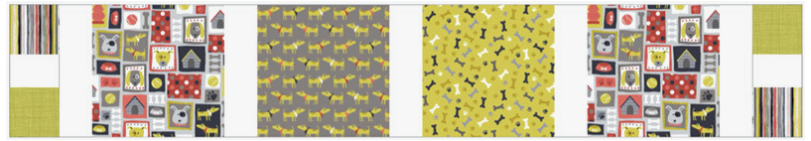


Rows 4 and 8

3. Sash together two pairs of 3" print squares using one white 2 1/2" x 3" strip per pair.



4. Sash together the two pieces made at 3 above and four print 7 1/2" squares using five white 2 1/2" x 8 1/2" strips.

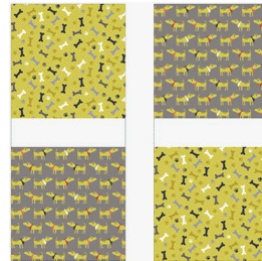


Row 6

5. Sash together two sets of four print 3" squares using three white 2 1/2" x 3" strips per set.



6. Sash together two pairs of print 7 1/2" squares using one white 2 1/2" x 7 1/2" strip between each pair.



7. Sash together the pieces made at 5 and 6 and one print 16 1/2" square using four white 2 1/2" x 16 1/2" strips.



8. Sash together the rows made above using four white 2 1/2" x 43 1/2" strips.
9. Add additional white 2 1/2" x 43 1/2" strips to the top and bottom of this piece.
10. Sash the sides of the quilt with the two white 2 1/2" x 47 1/2" strips to finish the quilt top.

Finishing the quilt

1. Sew the two pieces of backing fabric together along the long sides using a 1/2" seam. Press that seam open.
2. Sew the binding strips end to end using diagonal or straight seams as preferred and press wrong sides together along the length to make a double fold binding.
3. Make a quilt sandwich, basting together the quilt back, the wadding and the quilt top.
4. Quilt as desired then trim the quilt square, removing excess wadding and backing.
6. Bind the quilt taking care to mitre the corners.



1526/1 DOGS



1527/1 MONTAGE



1529/S BONES



1529/Y BONES



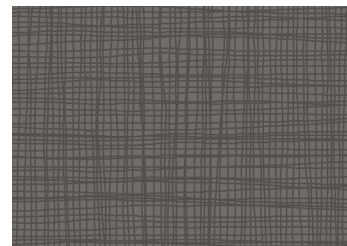
1530/1 BANDANA DOGS



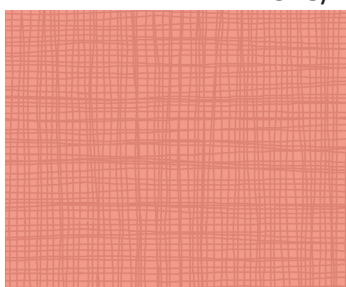
1528/1 ALLOVER



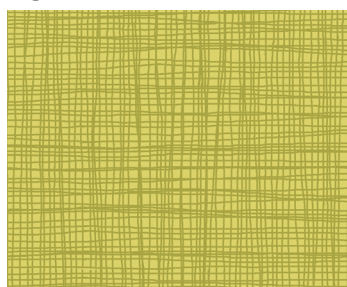
1523/S STRIPE



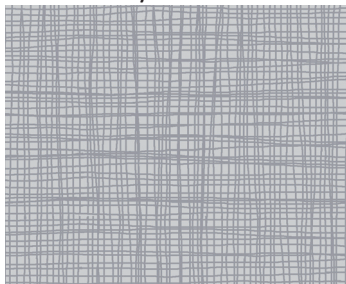
1525/S8 LINEA



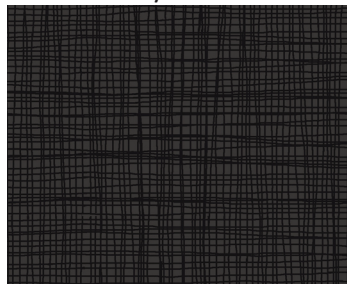
1525/P4 LINEA



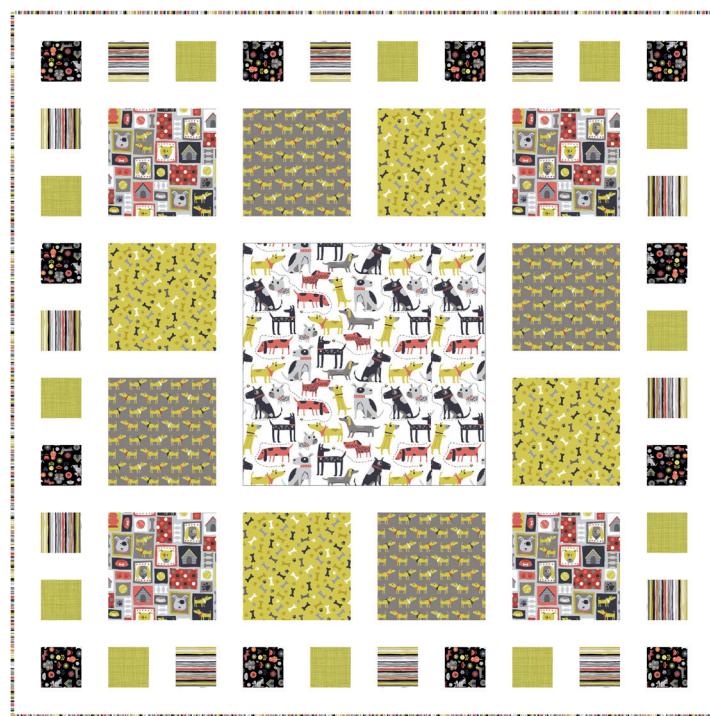
1525/Y LINEA



1525/S3 LINEA



1525/X LINEA



Patch Quilt by Lynne Goldsworthy  
of [lilysquilts.blogspot.com](http://lilysquilts.blogspot.com)  
Finished size 1.20 x 1.20 (47" x 47")  
Available to download free [www.makoweruk.com](http://www.makoweruk.com)