

# Quartz

ANDOVER FABRICS

**a**  
100  
*years*



Set in Stone Quilt designed by: **Janet Houts** • Quilt Size: **54" x 54"**  
Skill Level: **Intermediate** • [andoverfabrics.com](http://andoverfabrics.com)

andover • [makower.uk](http://makower.uk)

Free Pattern Download Available

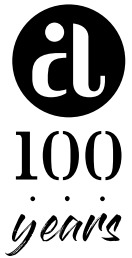
1384 Broadway New York, NY 10018  
Tel. (800) 223-5678 • [andoverfabrics.com](http://andoverfabrics.com)

1/15/21

# Set in Stone Quilt

Introducing Andover Fabrics new collection: **QUARTZ** by Andover Fabrics

Quilt designed by Janet Houts



Quilt finishes 54" x 54"

27 Blocks: 6" x 18"

*Build this bold wall quilt with stone-print fabrics in luscious colors. The gently curved patches are easy enough for someone with a little experience.*

## Fabric Requirements

		Yardage	Fabric	
<b>Fabric A</b>	blocks	1 $\frac{1}{8}$ yards	9795 L	
<b>Fabric B</b>	blocks	1 $\frac{1}{8}$ yards	9795 L1	
<b>9 Bright #1</b>	blocks	fat $\frac{1}{4}$ yard each		
9795 B1	9795 C	9795 E1	9795 G1	9795 O
9795 P2	9795 R	9795 T1	9795 V	
<b>9 Bright #2</b>	blocks	fat $\frac{1}{4}$ yard each		
9795 B2	9795 C1	9795 E	9795 G	9795 P
9795 P1	9795 T	9795 Y	9795 Y1	
<b>Binding</b>	binding	$\frac{1}{2}$ yard	9795 N1	
<b>Backing</b>		3 $\frac{1}{2}$ yards	9795 L	

## Cutting Directions

**Note:** Read assembly directions before cutting patches. All measurements are cut sizes and include  $\frac{1}{4}$ " seam allowances. A fat  $\frac{1}{4}$  is an 18" x 20"-22" cut. WOF designates the width of fabric from selvedge to selvedge (approximately 42" wide).

### Fabric A

Cut (12) Template 2

Cut (15) Template 2 Reversed

### Fabric B

Cut (15) Template 2

Cut (12) Template 2 Reversed

**9 Bright #1** From each:

Cut (2) Template 1

Cut (1) Template 1 Reversed

**9 Bright #2** From each:

Cut (1) Template 1

Cut (2) Template 1 Reversed

### Binding

Cut (6) strips 2 $\frac{1}{2}$ " x WOF for binding

### Backing

Cut (2) panels 31" x 62", pieced to fit quilt top with overlap on all sides

## Making the Quilt

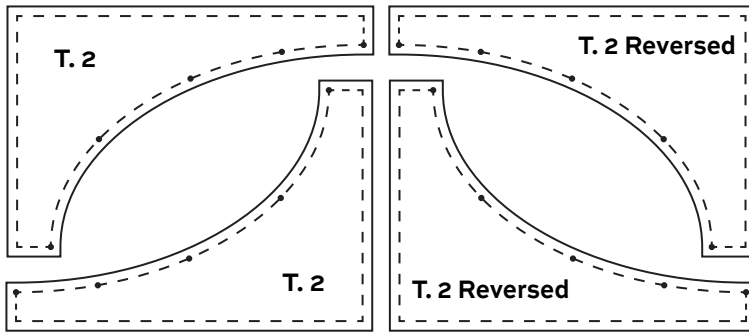
1. Make acrylic patterns of Template 1 and Template 2. Use an ice pick to punch holes at the dots. To conserve fabric, refer to the cutting diagram to cut Template 2 and Template 2 Reversed patches. Mark the dots on the wrong side of all patches.
2. Each block requires 1 of each patch. Sew a Fabric A or B Template 2 patch to a Template 1 bright patch, matching dots. Hint: Position Template 2 patch on top and pin in multiple places along the curve. Stitch slowly along the curve, adjusting the patches so their edges match. Likewise, join a Template 2 Reversed patch to a Template 1 Reversed patch. Press seam allowances away from the Template 1 patches. Join all patches in this manner. Referring to the Quilt Diagram for combinations of bright patches, join 2 halves to make each block. Make 27 blocks.
3. Referring to the Quilt Diagram, arrange 3 blocks to make each horizontal row, noting blocks that are rotated upside down. Arrange 9 rows. Once you are satisfied with the arrangement, join the blocks into rows, and then join the rows.

## Finishing the Quilt

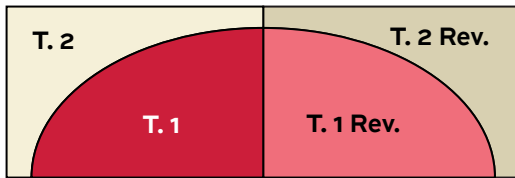
4. Layer the quilt with batting and backing and baste. Quilt in the ditch around block patches, or quilt an overall pattern across the quilt. Bind to finish the quilt.



## Cutting

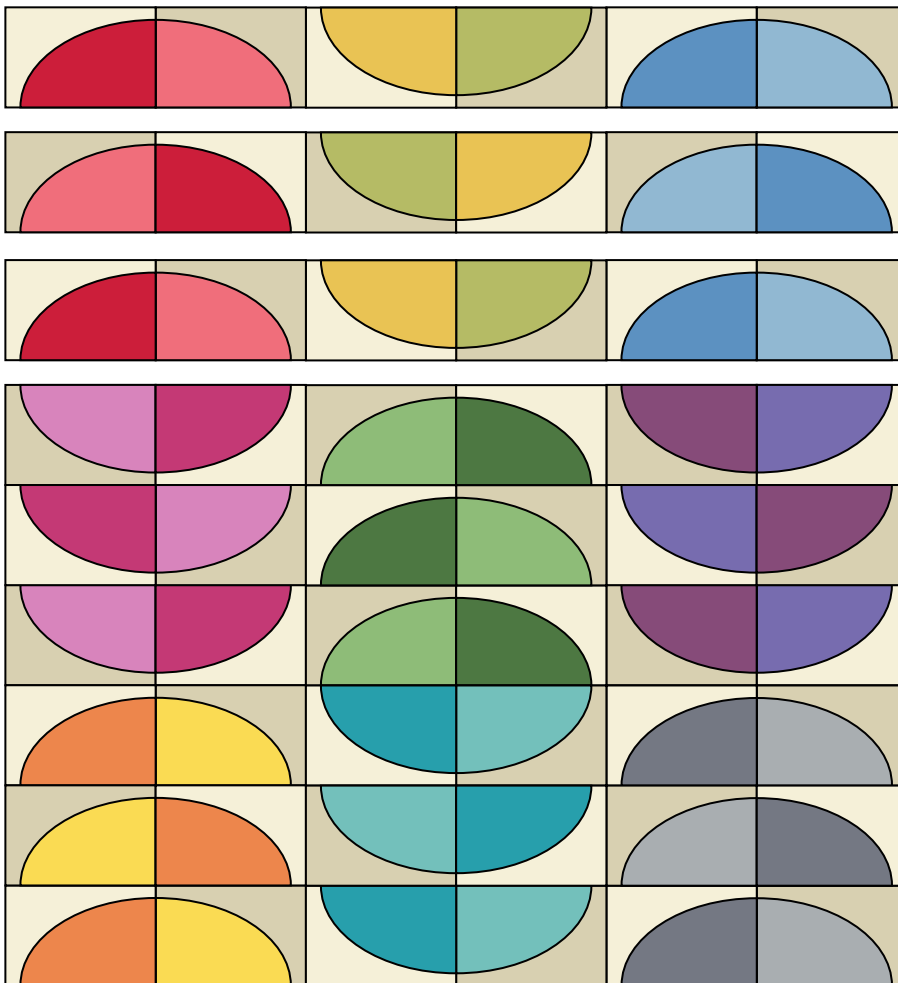
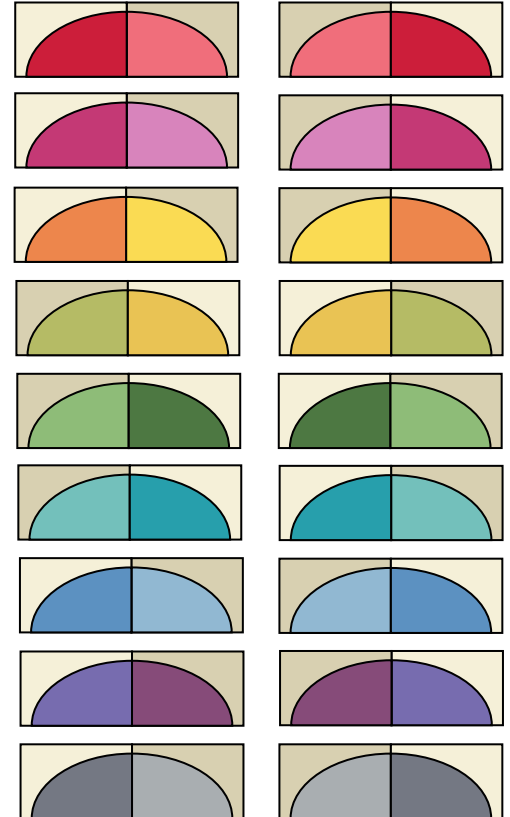


## Block

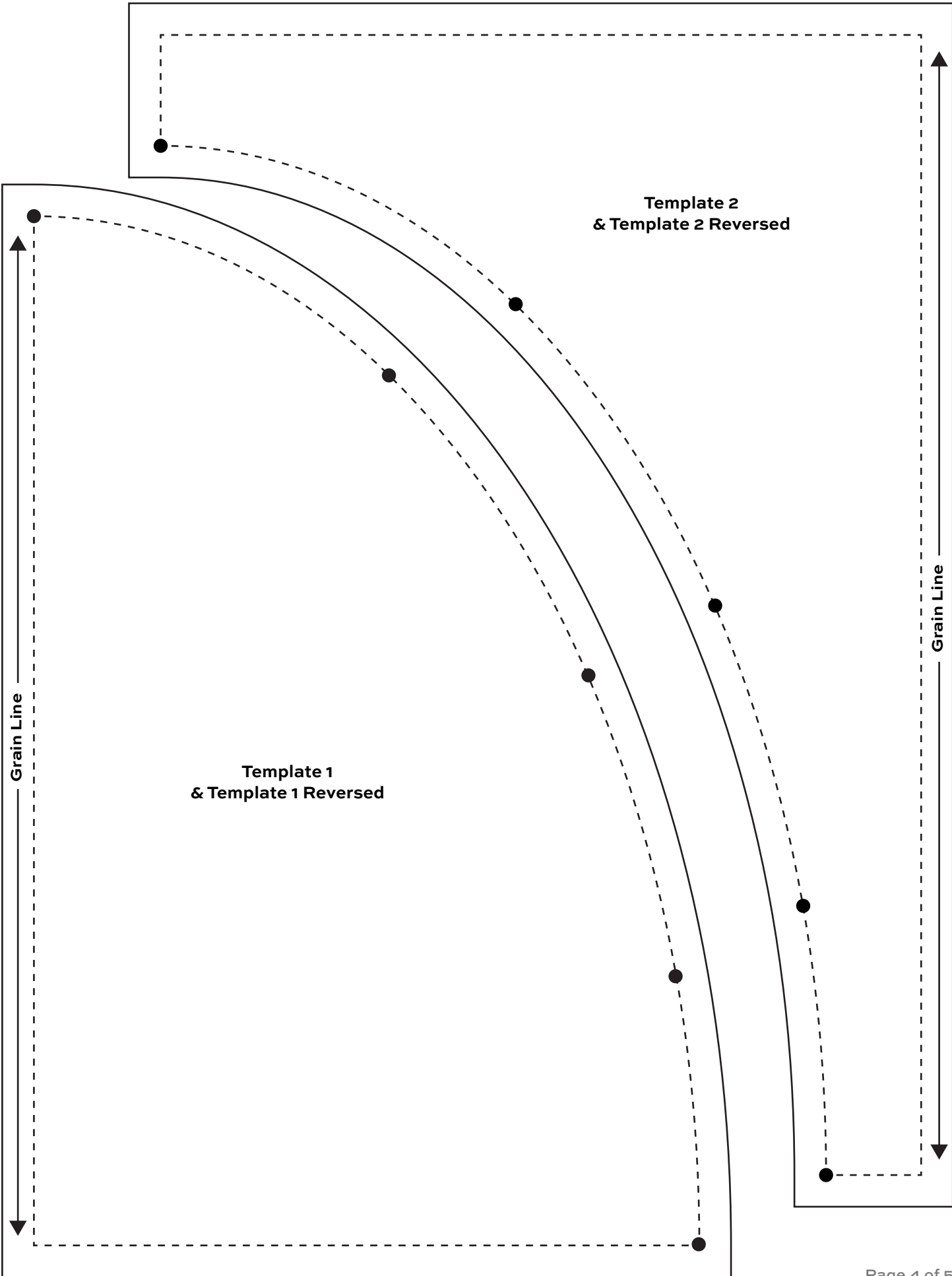


Make 2 each

Make 1 each



Quilt Diagram



# Quartz

ANDOVER FABRICS



100  
years



9795 R\*



9795 E\*



9795 P\*



9795 E1\*



9795 O\*



9795 Y\*



9795 Y1\*



9795 V\*



9795 G1\*



9795 G\*



9795 T\*



9795 T1\*



9795 B2\*



9795 B1\*



9795 B



9795 P2\*



9795 P1\*



9795 L1\*



9795 N1



9795 N



9795 L\*



9795 C1\*



9795 C\*



9795 K

\*Indicates fabrics used in quilt pattern. Fabrics shown are 100% of actual size.

andover



[makower.uk](http://makower.uk)

Free Pattern Download Available

1384 Broadway New York, NY 10018  
Tel. (800) 223-5678 • [andoverfabrics.com](http://andoverfabrics.com)