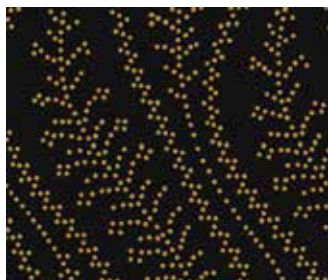
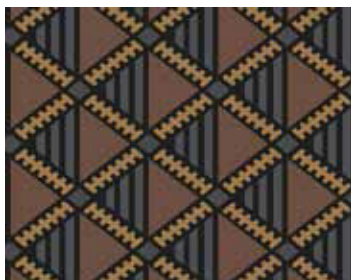
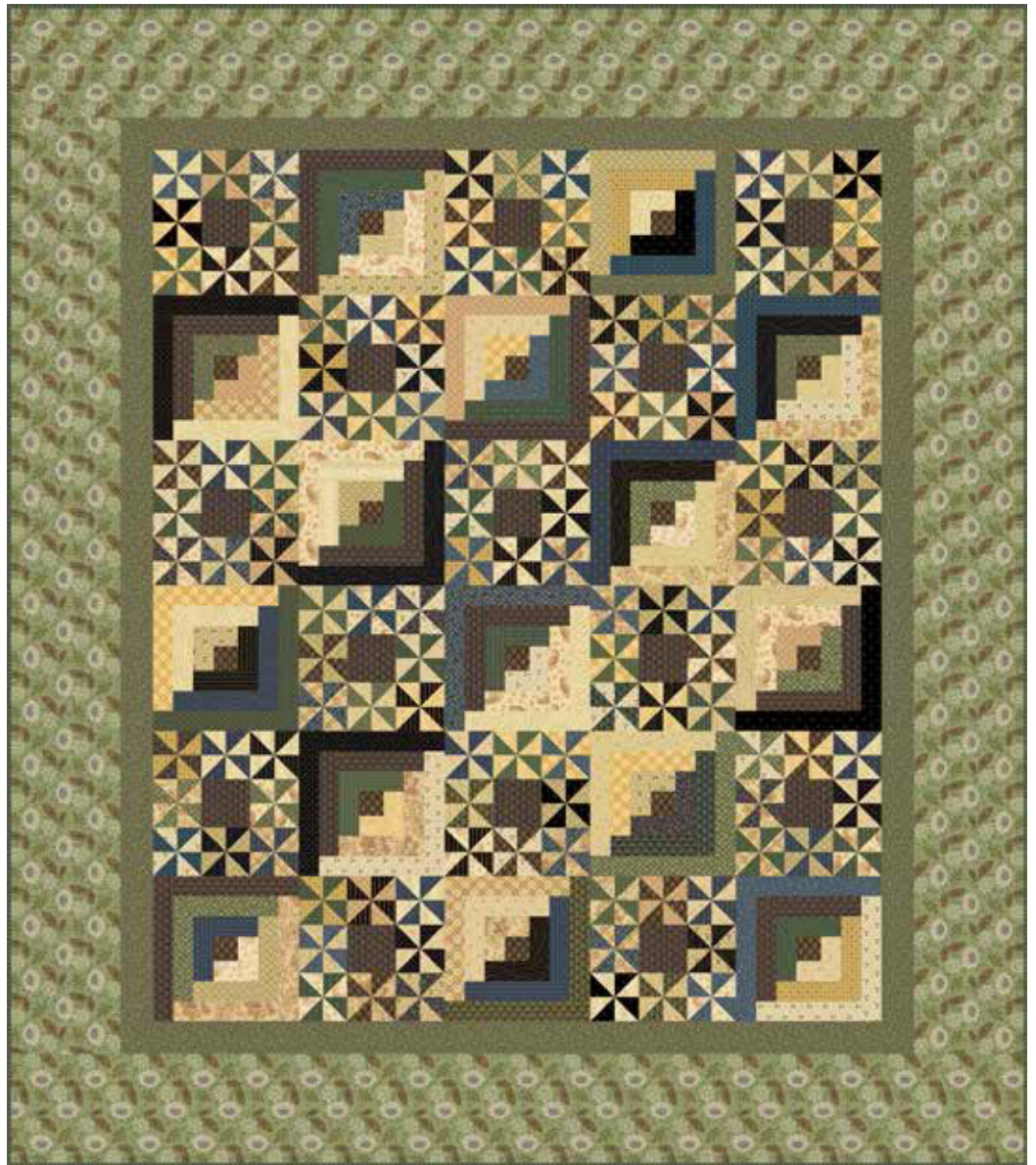
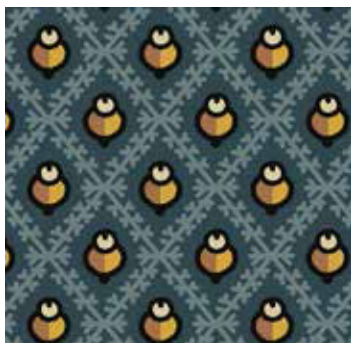


# Woodlands

FABRICS BY JO MORTON



Woodland Winds  
Quilt Design:  
**Candy Hargrove**  
Quilted by:  
**Maggi Honeyman**  
Quilt Size: 63" x 72"  
[andoverfabrics.com](http://andoverfabrics.com)



## About Woodlands

Time for another group of loved medium to dark fabrics, this time with added indigos and greens. These shades would be seen on a lovely walk in the park or perhaps on a trail in a forest. And there is a surprise — a sweet floral for each colorway. — *Jo Morton*

andover



makower uk  
*The Henley Studio*

Free Pattern Download Available

1384 Broadway New York, NY 10018  
Tel. (800) 223-5678 • [andoverfabrics.com](http://andoverfabrics.com)

# Woodland Winds Quilt



Introducing Andover Fabrics new collection: **WOODLANDS** by Jo Morton  
Quilt designed by Candy Hargrove. Quilted by Maggi Honeyman.

Quilt finishes 63" x 72"  
15 Log Cabin Blocks: 9" x 9"  
15 Pinwheel Blocks: 9" x 9"

*Log Cabin Blocks have long been a favorite of traditional quilters. Here, the cherished blocks are mated with pieced Pinwheels to make a heritage quilt with a fresh look. The placement of light and dark prints gives the quilt its diagonal focus. The quilt is the perfect size for snuggling under on a cool winter's evening.*

## Cutting Directions

**Note:** Read assembly directions before cutting patches. All measurements are cut sizes and include ¼" seam allowances. A fat ⅛ is a 9" x 21"-22" cut of fabric. A fat ¼ is an 18" x 21"-22" cut. Borders are cut the exact lengths required plus ¼" seam allowances. WOF designates the width of fabric from selvedge to selvedge (approximately 42" wide).

### Fabric A

Cut (2) side borders 7½" x 63½", cut lengthwise  
Cut (2) top/bottom borders 7½" x 58½", cut lengthwise

### Fabric B

Cut (2) side borders 2½" x 54½", cut crosswise  
Cut (2) top/bottom borders 2½" x 49½", cut crosswise

### Fabric C

Cut (15) squares 2" for Log Cabin block centers

### Fabric D

Cut (15) squares 3½" for Pinwheel block centers

### Fabric E

Cut (7) strips 2½" x WOF for straight-grain binding *or* cut (1) rectangle 26" x 36" for bias binding (see Step 8)

### 17 Light Prints

**From each:** Cut (2) strips 1¾" x 21" for Log Cabin  
Cut (14 or 16) squares 2¾" for Pinwheels (240 squares total)

### 23 Dark Prints

**From each:** Cut (1 or 2) strips 1¾" x 21" for Log Cabin  
Cut (10) squares 2¾" for Pinwheels (240 squares total)  
**Hint:** Also cut strips and squares from Fabrics B-E as desired.

**Backing** Cut (2) panels 40" x 71", pieced to fit quilt top with overlap on all sides

## Fabric Requirements

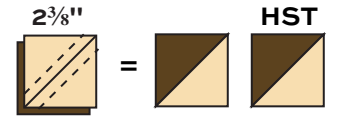
		Yardage		Fabric
<b>Fabric A</b>	outer border	2 yards		7458-G
<b>Fabric B</b>	inner border	¾ yard		7459-G
<b>Fabric C</b>	L.C. center	fat ¼ yard		7460-YN
<b>Fabric D</b>	Pinwheel ctr.	fat ¼ yard		7462-YN
<b>Fabric E</b>	blocks, binding	¾ yard		7465-G
<b>17 Lt. Prts.</b>	blocks	fat ⅛ yard ea.		
5864-L	5864-N	5865-L	5865-N	5866-L
5866-N	5868-L	5868-N	5869-L	5869-N
5870-L	5870-N	5871-L	5871-N	5609-L
5692-NK	5693-NY			
<b>23 Dk. Prints</b>	blocks	fat ⅛ yard ea.		
7459-B	7460-B	7462-B	7463-B	7461-B
7464-B	7465-B	7466-B	7467-B	7460-G
7462-G	7463-G	7461-G	7464-G	7466-G
7467-G	*7459-YK	7463-YC	7463-YK	7464-YK
7465-YK	7466-YK	7467-YK		
<b>Backing</b>		4 yards		7459-YK



# Woodland Winds Quilt

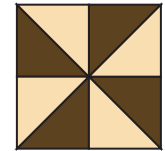
## Making the Quilt

1. The Pinwheel Blocks use half-square triangles (HST) that finish  $1\frac{1}{2}$ " square. Use your favorite method to make HST, or follow these directions. Draw a diagonal line on the wrong side of each light  $2\frac{3}{8}$ " square. Place a marked square on a dark square, right sides together. Sew  $\frac{1}{4}$ " seam on each side of the marked line (Diagram 1). Cut apart on the marked line. Press open. Make 4 HST alike for each Pinwheel Unit. Join 4 like HST as shown in Diagram 2 to make a Pinwheel Unit. Make a total of 120 units, each using a different combination of light and dark prints.



Make 4 alike (480 total)  
Diagram 1

2. Referring to Diagram 3, join 8 different Pinwheel Units with a Fabric D  $3\frac{1}{2}$ " square to make a Pinwheel Block. It should measure  $9\frac{1}{2}$ " from edge to edge. Make 15.



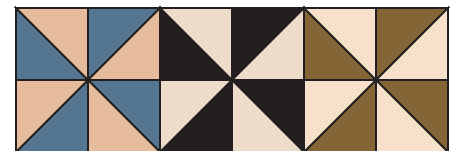
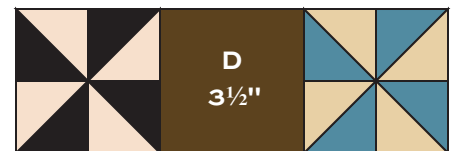
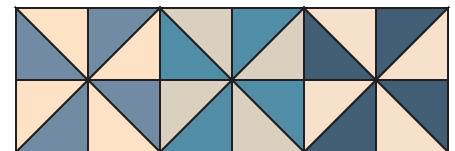
Pinwheel Unit – Make 120  
Diagram 2

3. Each Log Cabin Block is made with 3 light and 3 dark prints. Note that 2 strips are cut from each print for a block. Each block is different to make a truly scrappy quilt.

### For each Log Cabin Block, cut the following from the $1\frac{3}{4}$ " x 20" strips:

- |                                                            |                                                             |
|------------------------------------------------------------|-------------------------------------------------------------|
| Dark #1: Cut (1) strip $1\frac{3}{4}$ " x $3\frac{1}{4}$ " | Light #1: Cut (1) strip $1\frac{3}{4}$ " x 2"               |
| Cut (1) strip $1\frac{3}{4}$ " x $4\frac{1}{2}$ "          | Cut (1) strip $1\frac{3}{4}$ " x $3\frac{1}{4}$ "           |
| Dark #2: Cut (1) strip $1\frac{3}{4}$ " x $5\frac{3}{4}$ " | Light #2: Cut (1) strip $1\frac{3}{4}$ " x $4\frac{1}{2}$ " |
| Cut (1) strip $1\frac{3}{4}$ " x 7"                        | Cut (1) strip $1\frac{3}{4}$ " x $5\frac{3}{4}$ "           |
| Dark #3: Cut (1) strip $1\frac{3}{4}$ " x $8\frac{1}{4}$ " | Light #3: Cut (1) strip $1\frac{3}{4}$ " x 7"               |
| Cut (1) strip $1\frac{3}{4}$ " x $9\frac{1}{2}$ "          | Cut (1) strip $1\frac{3}{4}$ " x $8\frac{1}{4}$ "           |

4. Piece the light and dark strips around the center Fabric C 2" square, working in clockwise order (Diagram 4). Press seam allowances away from the center to make a Log Cabin Block. It should measure  $9\frac{1}{2}$ " square from edge to edge. Make 15.



Pinwheel Block – Make 15  
Diagram 3

5. Referring to the Quilt Assembly Diagram, join 3 Pinwheel Blocks and 2 Log Cabin Blocks to make Row 1, rotating the Log Cabin Blocks as shown. Press seam allowances toward the Log Cabin Blocks. Join 3 Log Cabin Blocks and 2 Pinwheel Blocks to make Row 2, rotating blocks as shown. Continue in this manner to make a total of 6 horizontal rows, referring to the diagram for placement. Join the rows in the order shown. Press seam allowances open between rows.

6. Sew Fabric B borders to the sides and then to the top and bottom. Repeat with Fabric A borders.

## Finishing the Quilt

7. Layer the quilt with batting and backing and baste. Quilt in the ditch around borders and block patches. Quilt around the printed motifs in the outer border.

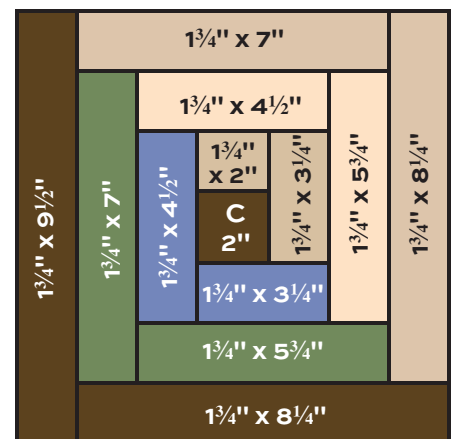
8. To bind with bias binding, cut the 26" x 36" rectangle at a 45-degree angle anywhere along the length (Diagram 5). Join the 2 patches along their short sides to make a parallelogram (Diagram 6). Cut  $2\frac{1}{2}$ "-wide strips from the angled (bias) edge. Join the strips end to end. Bind to finish the quilt in the usual manner, being careful not to stretch the bias binding.



Diagram 5

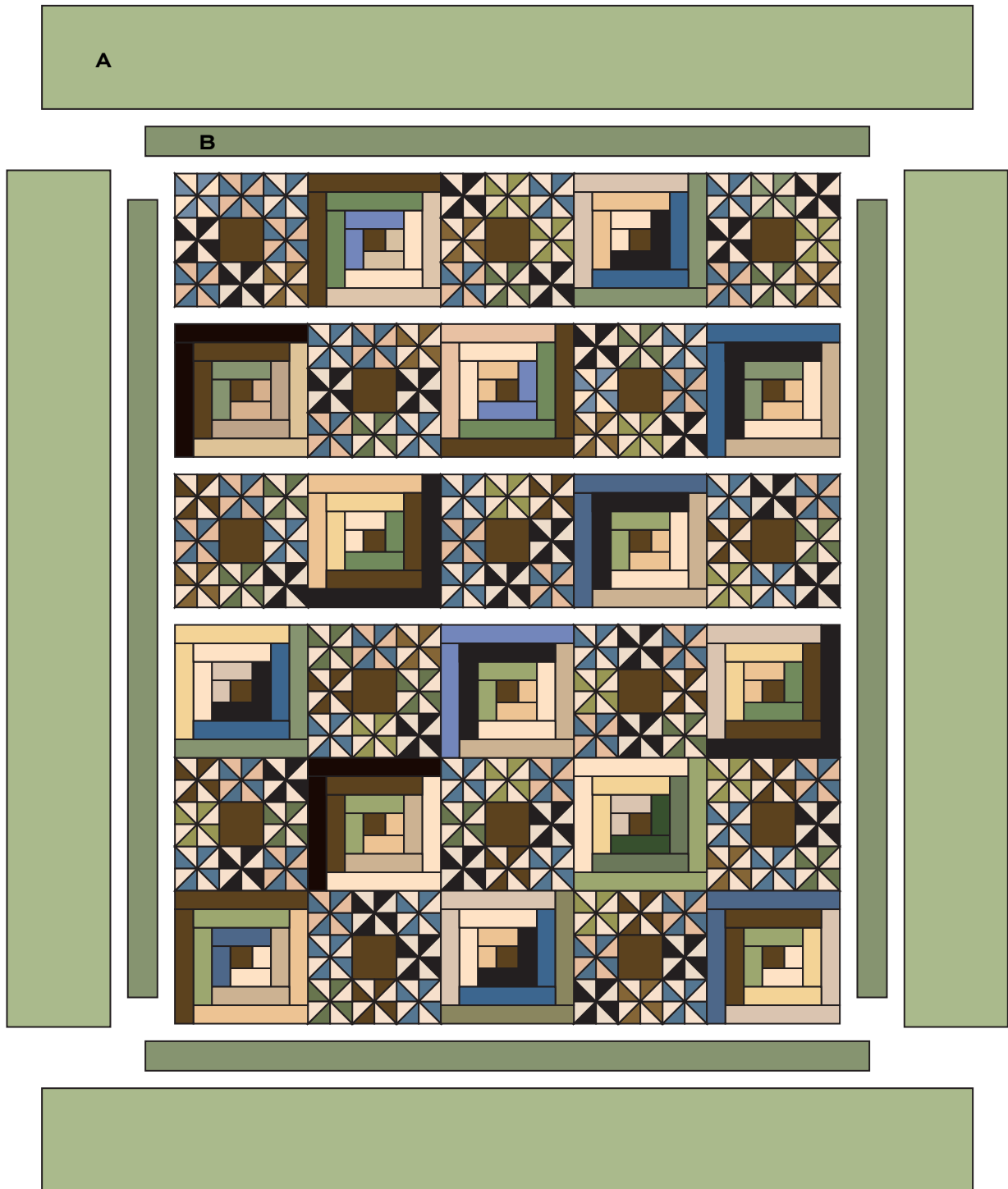


Diagram 6



Log Cabin Block – Make 15  
Diagram 4

# Woodland Winds Quilt



Quilt Assembly Diagram

# Woodlands

FABRICS BY JO MORTON



7458-B



7459-B\*



7460-B\*



7462-B\*



7463-B\*



7461-B\*



7464-B\*



7465-B\*



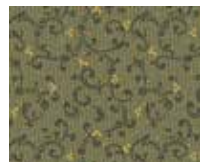
7466-B\*



7467-B\*



7458-G\*



7459-G\*



7460-G\*



7462-G\*



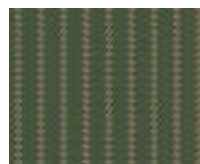
7463-G\*



7461-G\*



7464-G\*



7465-G\*



7466-G\*



7467-G\*



7458-Y



7459-YK\*



7460-YN\*



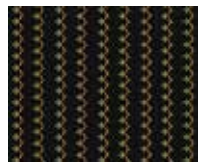
7463-YC\*



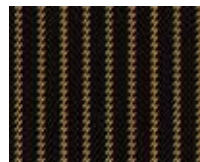
7463-YK\*



7462-YN\*



7464-YK\*



7465-YK\*



7466-YK\*



7467-YK\*

Blend with fabrics from **Toasted** by Jo Morton



5864-L\*



5864-N\*



5865-L\*



5865-N\*



5866-L\*



5866-N\*



5868-L\*



5868-N\*



5869-L\*



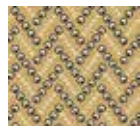
5869-N\*



5870-L\*



5870-N\*



5871-L\*



5871-N\*



5609-L\*



5692-NK\*



5693-NY\*

\*Indicates fabrics used in quilt pattern. Fabrics shown are 40% of actual size.

andover

•  
•  
• **makower uk**  
• *The Henley Studio*

Free Pattern Download Available

1384 Broadway New York, NY 10018  
Tel. (800) 223-5678 • andoverfabrics.com